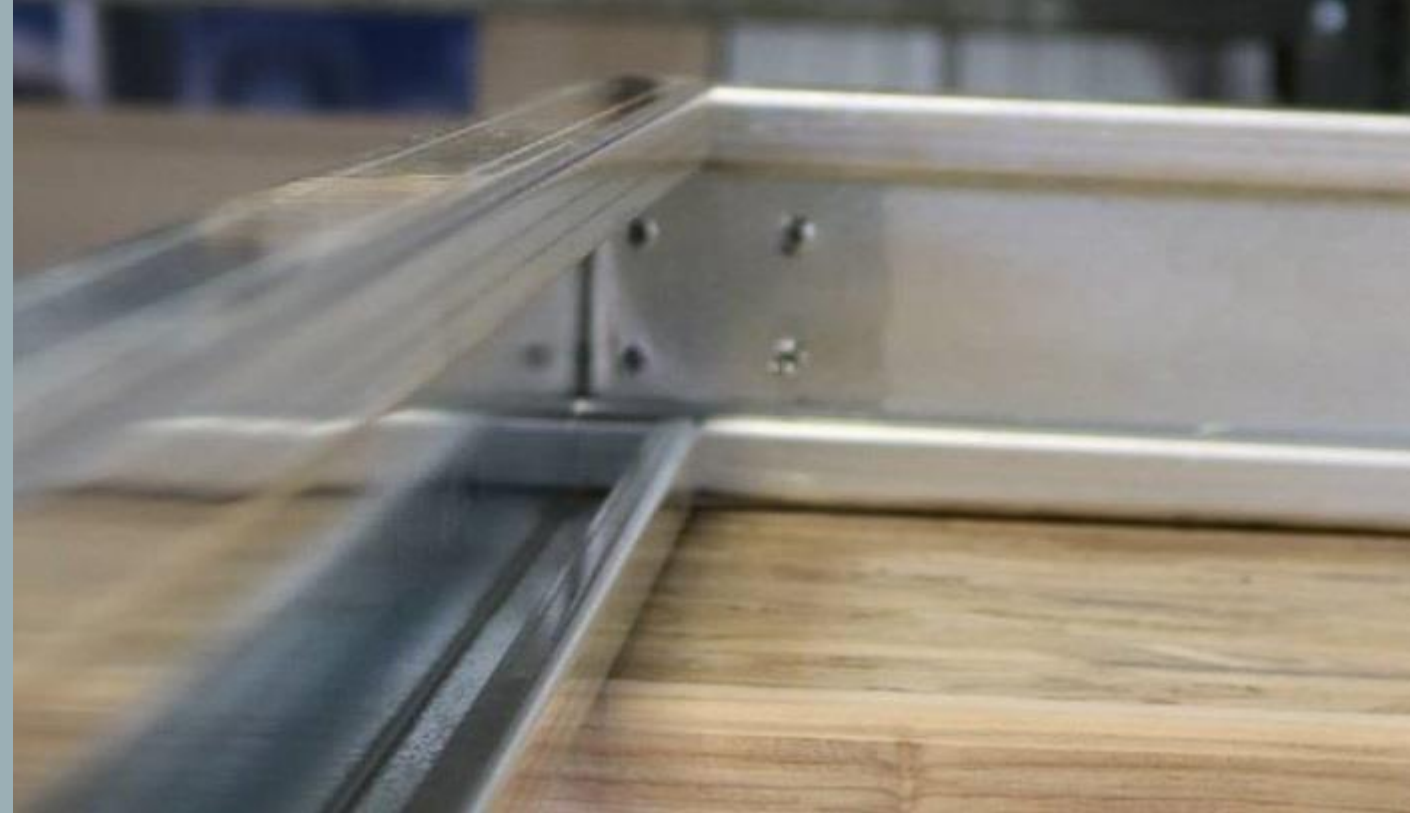
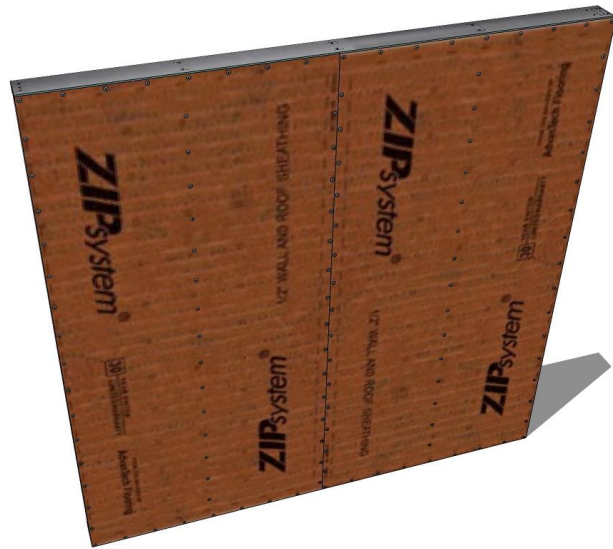




**SUPERPANEL™**

**PRODUCT OVERVIEW**



Although proprietary in nature, our SuperPanel™ wall systems do not deviate from long established methods of light gauge steel framing construction

All we have done is incorporate simplified improvements in design strength of the actual members that comprise our rigid steel panel sections.

Our SuperPanel™ components are G90 coated 14 Ga. or 16 Ga. with material thicknesses ranging between a minimum of .0779" to .0781" (14 Ga.) and .0625" to .0635" (16 Ga.) respectively.

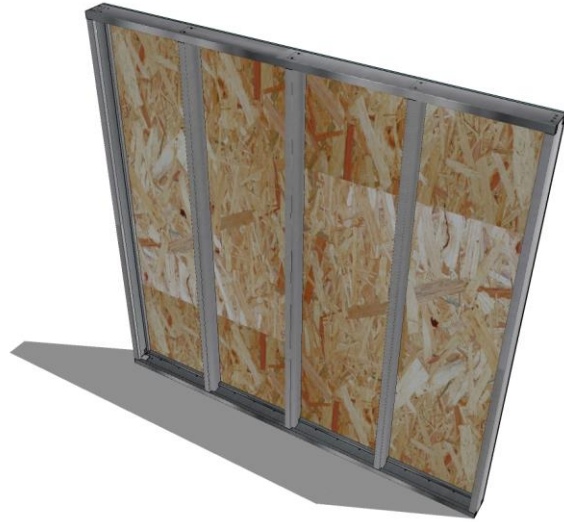
All of our framing members are spaced @ 24" OC in accordance to advanced framing techniques and Optimal Value Engineering specifications to maintain frame on frame alignment and structural load bearing consistency.

We can accommodate stud spacing as required at 16" OC or 12" OC.

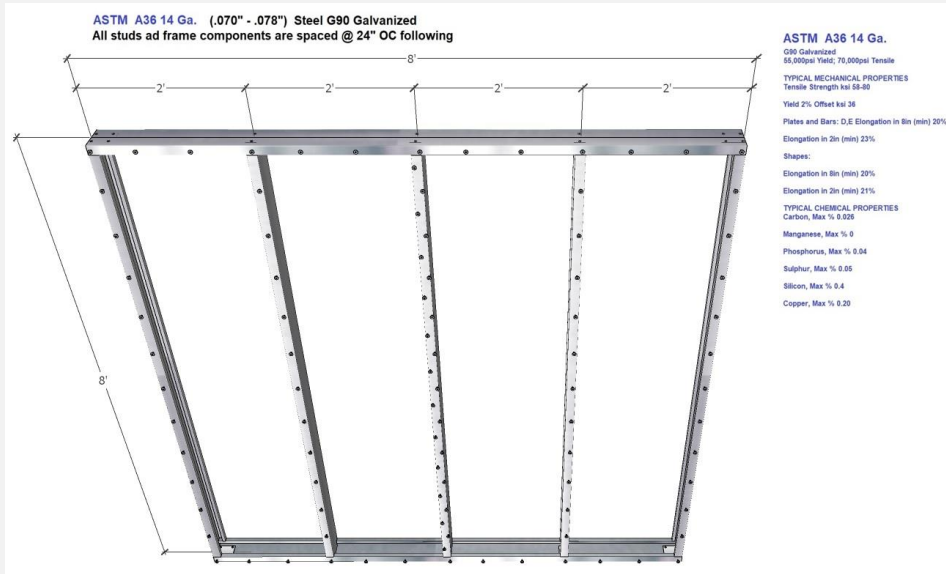
# ALLOWABLE COMBINED AXIAL & LATERAL LOADS - NORDIC STEEL I4 GAUGE SUPERPANEL

Wind Load PSF	14 Gauge (50 KSI) @ 24" OC 8' Length 5" Width 1 5/8" Depth	14 Gauge (50 KSI) @ 16" OC 8' Length 5" Width 1 5/8" Depth	16 Gauge (50 KSI) @ 24" OC 8' Length 5" Width 1 5/8" Depth	16 Gauge (50 KSI) @ 16" OC 8' Length 5" Width 1 5/8" Depth
5 PSF	7.33	7.41	5.49	5.57 *
15 PSF	6.88	7.10	5.02	5.25
20 PSF	6.65	6.95	4.79	5.10
25 PSF	6.43	6.80	4.56	4.94
30 PSF	6.21	6.65	4.33	4.79
35 PSF	5.99	6.50	4.11	4.64
40 PSF	5.77 *	6.35	3.89	4.88

**\* Using 14 Ga. @ 24" OC provides greater Axial & Lateral load resistance with Wind Loads of 40 PSF, than 16 Ga. @ 16" OC with wind loads of 5 PSF.**



**ALL SUPERPANELS™ OUTER FRAMES ARE  
DIMENSIONALLY A NOMINAL 2X6" OR 5 1/2"  
(INCLUDING 1/2" SHEATHING) X 1 5/8", ALL  
STUDS AND FRAMES.**



ASTM A36 14 GA.  
G90 GAVANIZED  
55,000 PSI YIELD  
70,000 PSI TENSILE



**6' Panel shown, no panel is wider than 8'. All sheathing is screwed 6" OC (on center) to all steel components.**

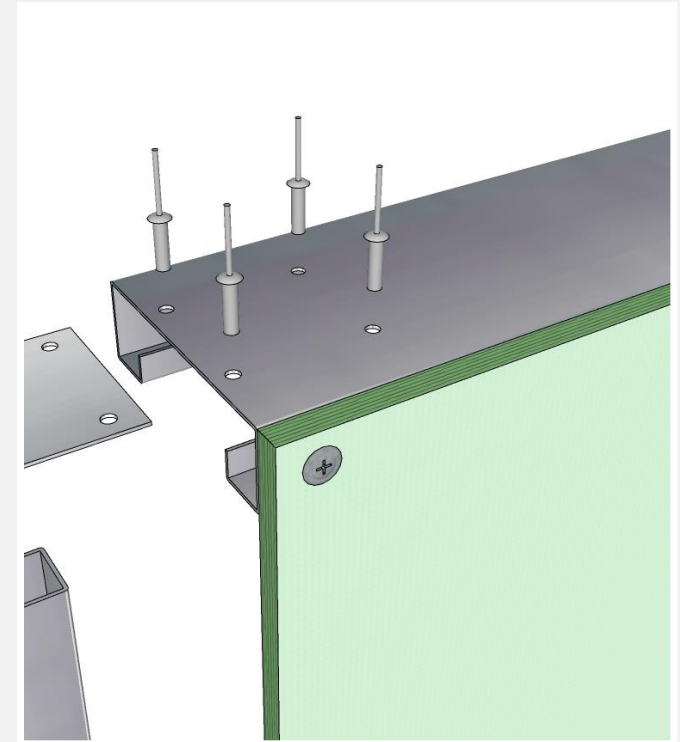


**STRENGTH & PRECISION THAT  
FAR SURPASSES SPF FRAMING**

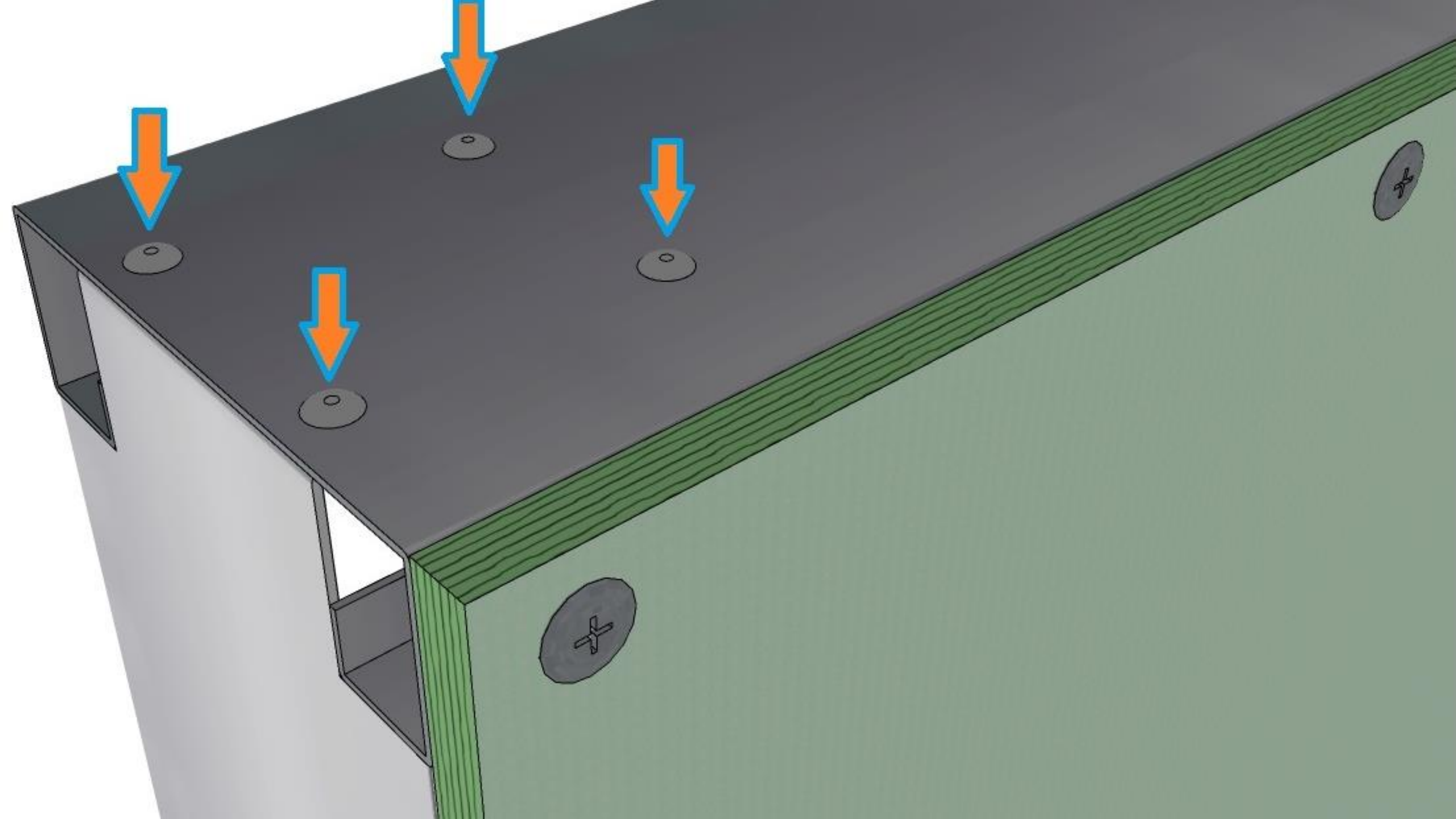
**STRUCTURAL BLIND RIVET –  
DIAMETER .257" (1/4")  
-.350" - .625" – BH – ST/ST**

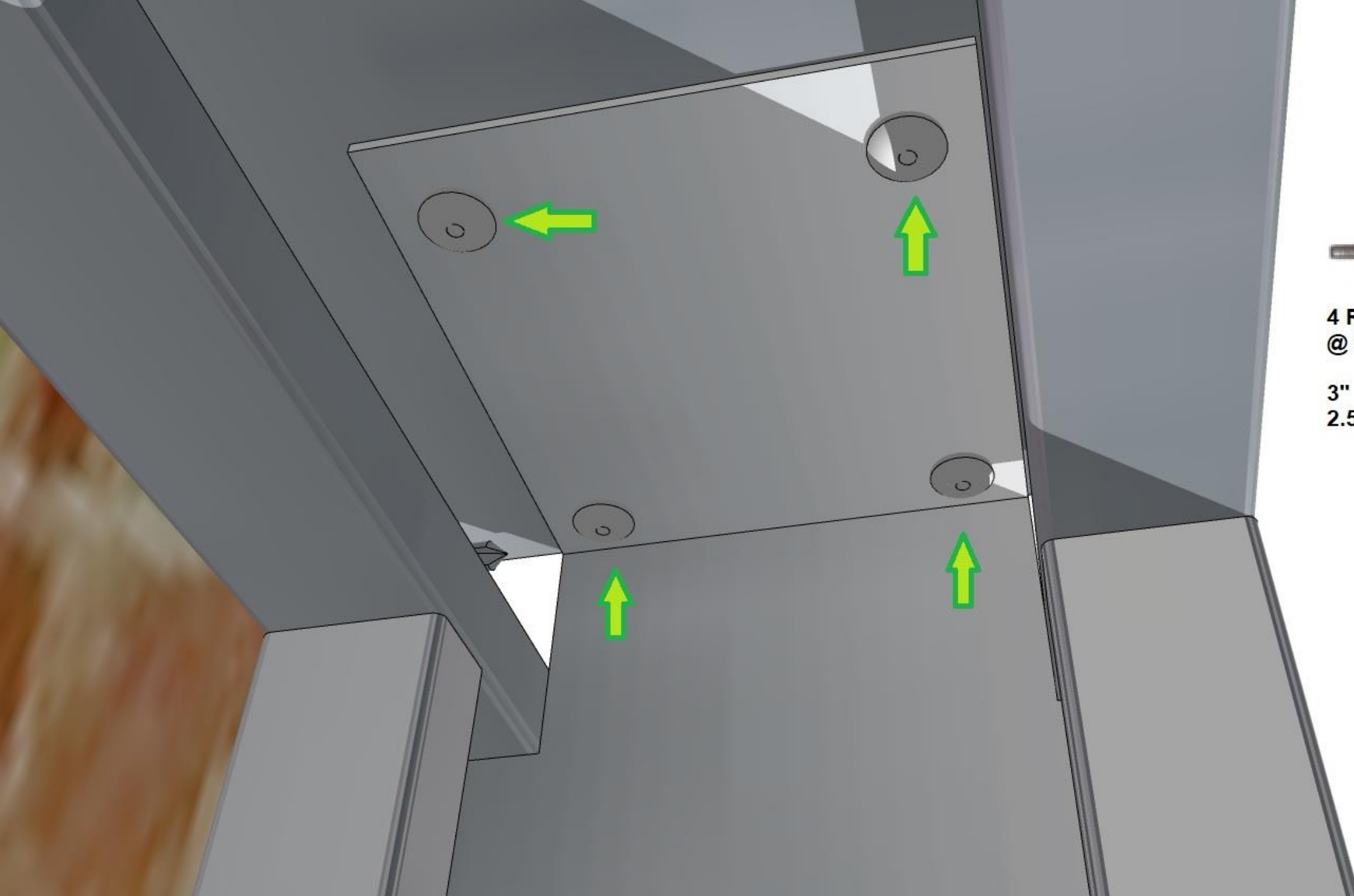
**ALL SUPERPANEL™ FRAMES AND STUDS ARE  
FASTED TO EACH OTHER UTILIZING ZINC  
COATED, 1/4" BLIND STEEL RIVETS.**

<b>TENSILE STRENGTH</b>	<b>1850-2200 LB</b>
<b>SHEAR STRENGTH</b>	<b>2500-2750 LB</b>
<b>HEAD</b>	<b>BUTTON</b>
<b>HOLE SIZE</b>	<b>0.261" – 0.272"</b>
<b>FINISH – BODY / MANDREL</b>	<b>PLAIN</b>
<b>DRILL SIZE</b>	<b>F</b>
<b>MATERIAL – BODY / MANDREL</b>	<b>STEEL / STEEL</b>
<b>GRIP SIZE</b>	<b>0.350" – 0.625"</b>
<b>DIAMETER</b>	<b>1/4"</b>
<b>SPECIFICATION</b>	<b>IFI130</b>
<b>SERIES</b>	<b>SB8-10KL</b>
<b>TYPE</b>	<b>STRUCTURAL BLIND RIVET</b>
<b>HEAD HEIGHT</b>	<b>0.117"</b>
<b>LENGTH</b>	<b>0.810"</b>
<b>WEIGHT</b>	<b>0.6</b>









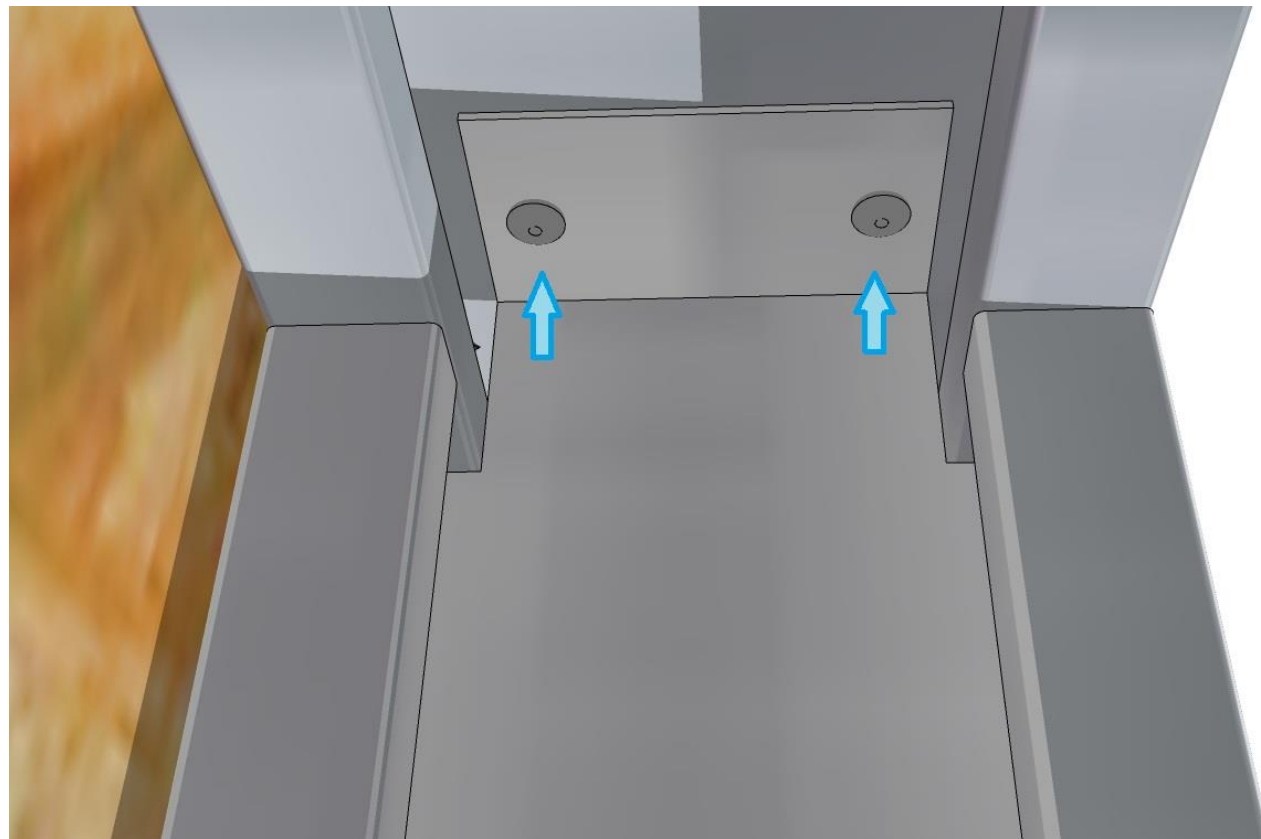
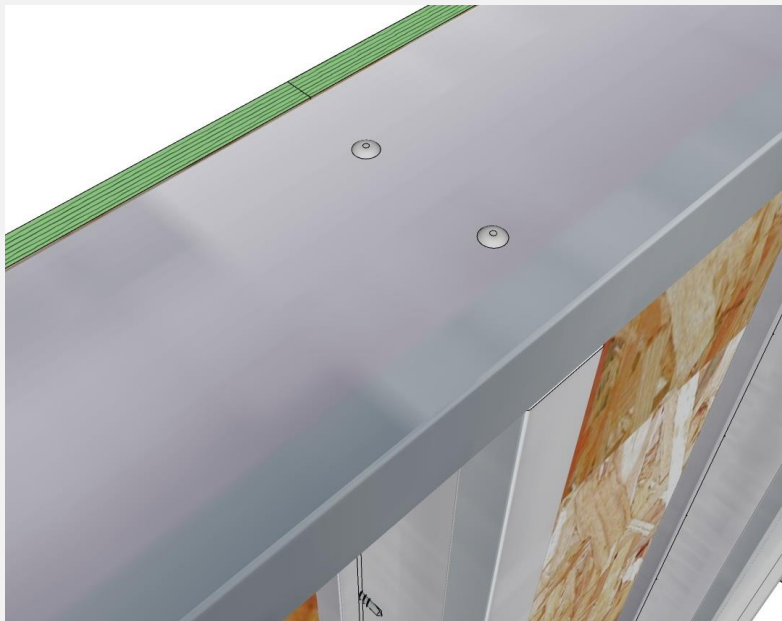
**4 RIVETS SPACED  
@ EACH FRAME CORNER**

**3" OC ON Y  
2.5" OC ON X**

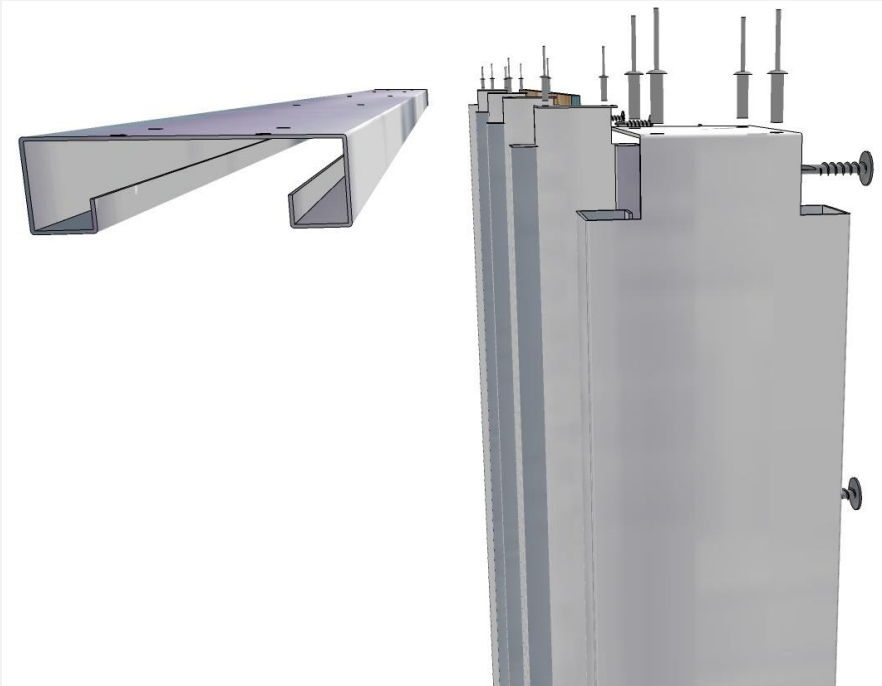




# STUD FLANGES RIVETED



**EACH INDIVIDUAL COMPONENT  
ENSURES ANGULAR &  
DIMENSIONAL PRECISION**

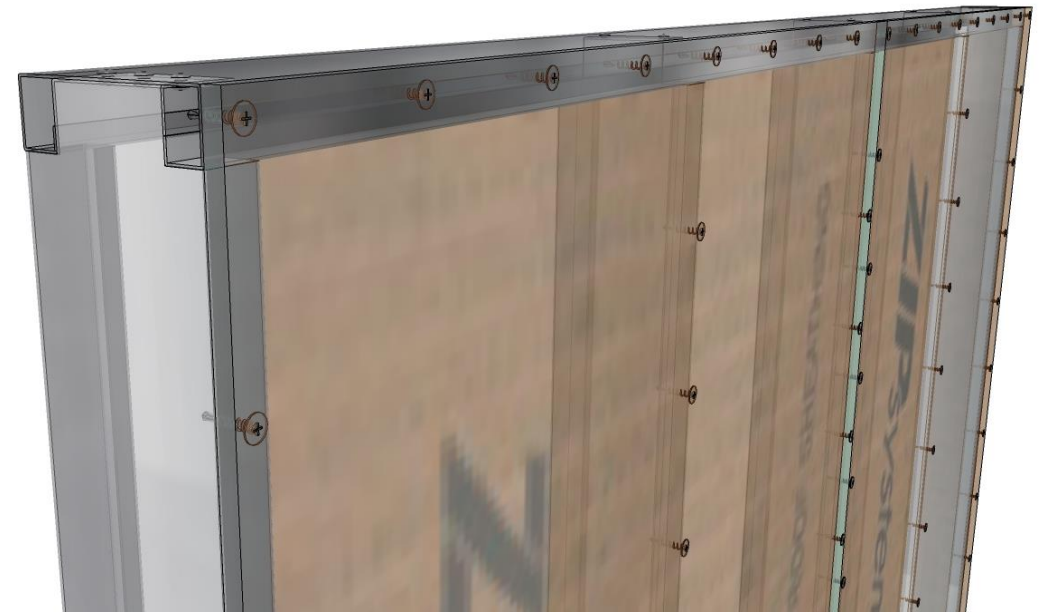
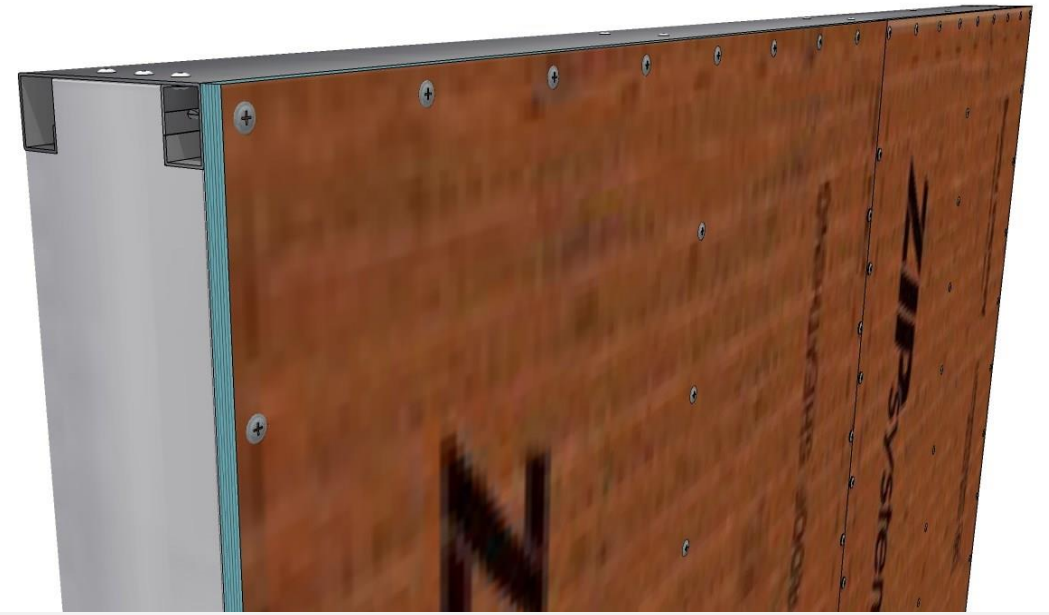




**THE PANEL  
SHEATHING IS  
FASTENED TO THE  
COMPLETED,  
SUPERPANEL™  
FRAME AND STUD  
UNIT WITH  
#12-24 X 1-5/8"  
PHILLIPS FLAT  
HEAD, GRAY SPEX  
FINISH, #4 POINT  
WINGED, WOOD-TO-  
METAL TEKS®  
SELF-DRILLING  
SCREWS.**



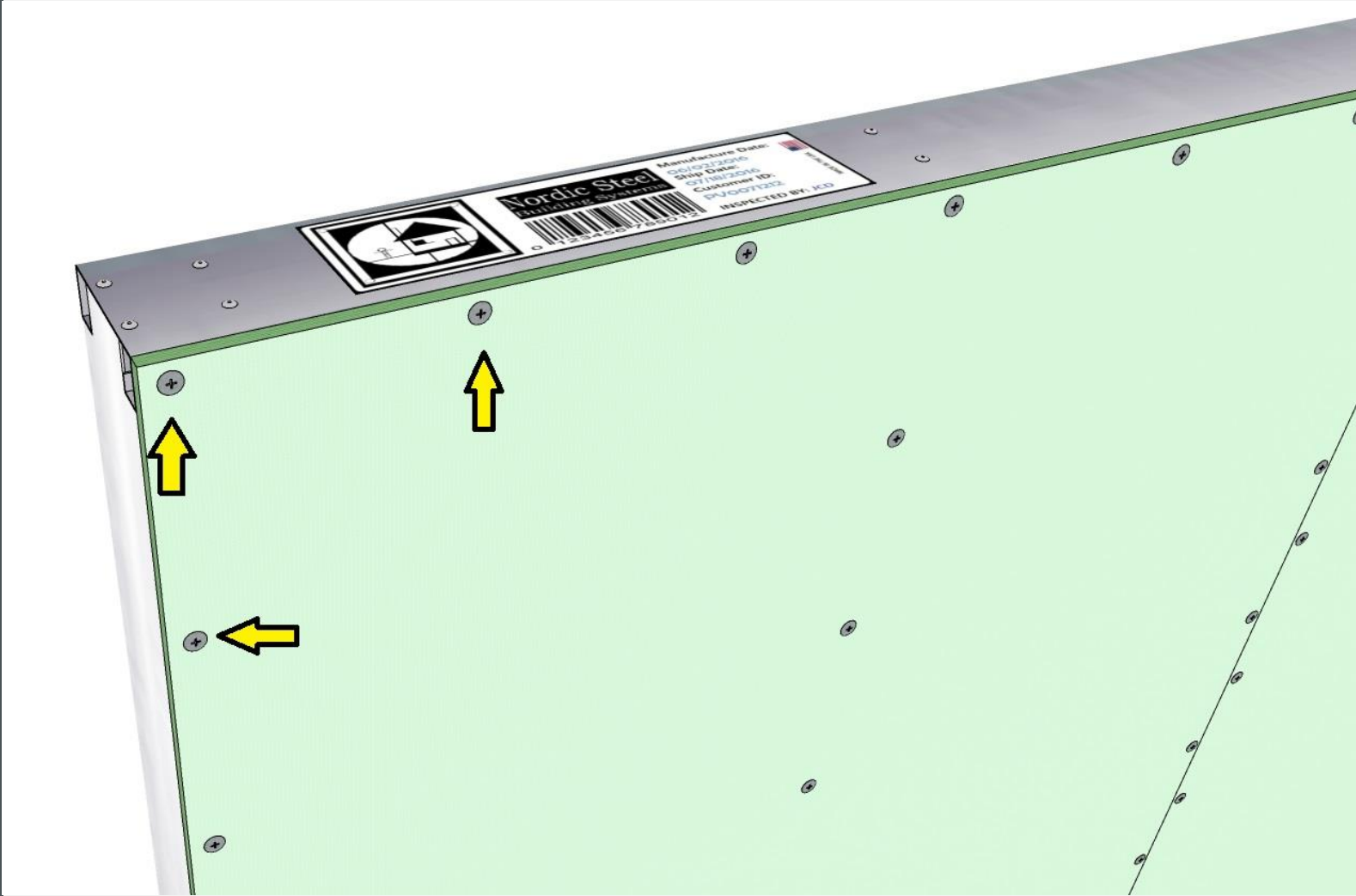
**ALL SCREWS ARE  
MOUNTED FLUSH  
WITH THE EXTERIOR  
FACE OF THE  
SHEATHING.**



**#12-24 X 1-5/8" PHILLIPS FLAT HEAD, GRAY SPEX FINISH,  
#4 POINT WINGED, WOOD-TO-METAL TEKS®  
SELF-DRILLING SCREWS @ 6" OC. WHERE SEAMED @ 4"  
OC STAGGERED ROWS.**



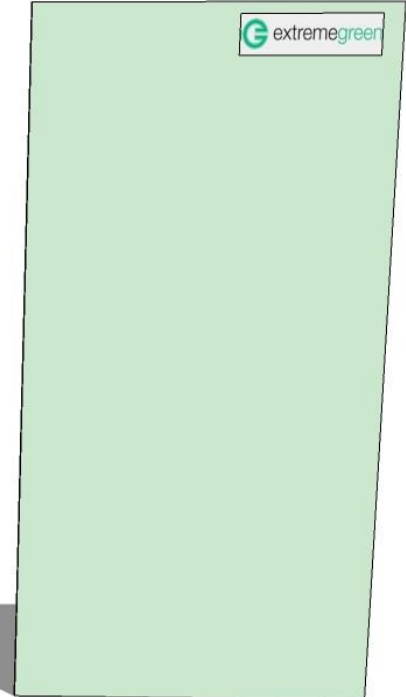
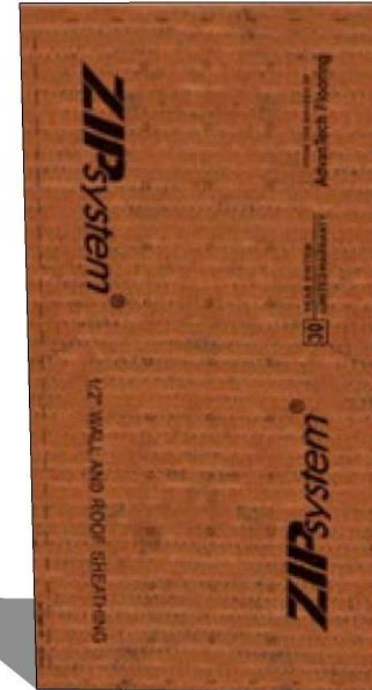
DRIVE	PHILLIPS
GRADE	CASE HARDENED
DRIVE SIZE	#3
HOLE SIZE	0.261" – 0.272"
STYLE - WINGED	Wood-To-Metal TEKS®
DIA. THREAD SIZE	#12-24
MATERIAL	STEEL
POINT	#4
TYPE	SELF DRILLING STRUCTURAL
LENGTH	1 5/8"

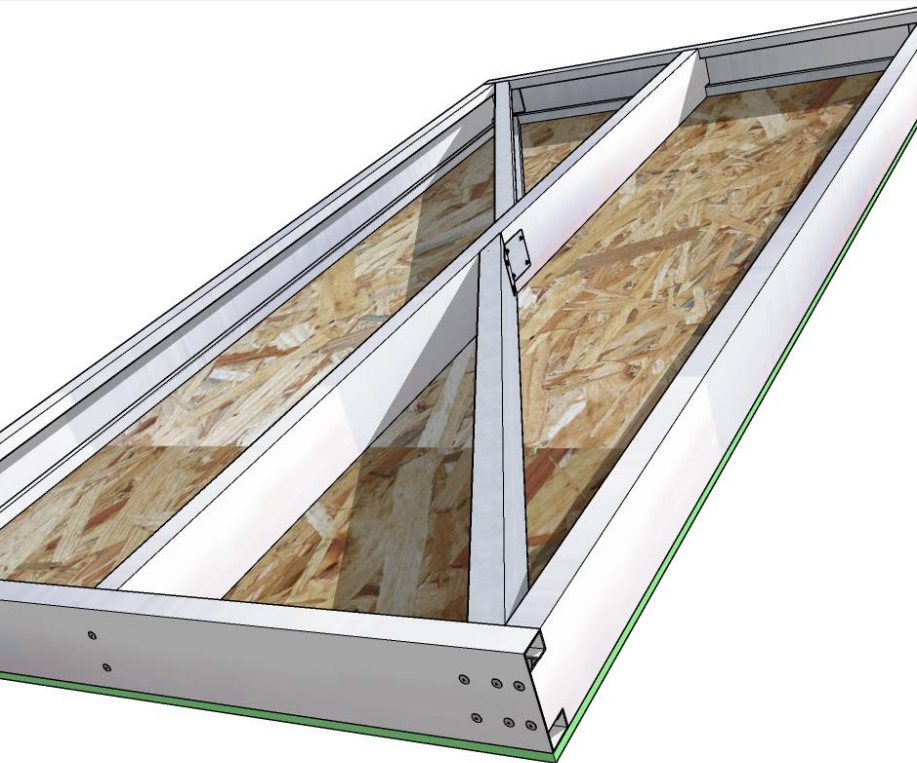




WE OFFER 3 TYPES  
OF EXTERIOR  
SHEATHING

- **NORDIC STEEL SYSTEM'S SUPERPANELS™ ARE CLAD IN ½" STRUCTURAL SHEATHING.**
- **PREMIUM OSB (ALL EXTERIOR SURFACES AND EDGES COATED IN ACRYLIC <1% PERM RATED WATERPROOFING )**
- **ZIP™ 1/2 " FROM HUBER ENGINEERED WOODS**
- **½" MgO (MAGNESIUM OXIDE) STRUCTURAL BOARD FROM**  
<http://extremegreenbp.com/>



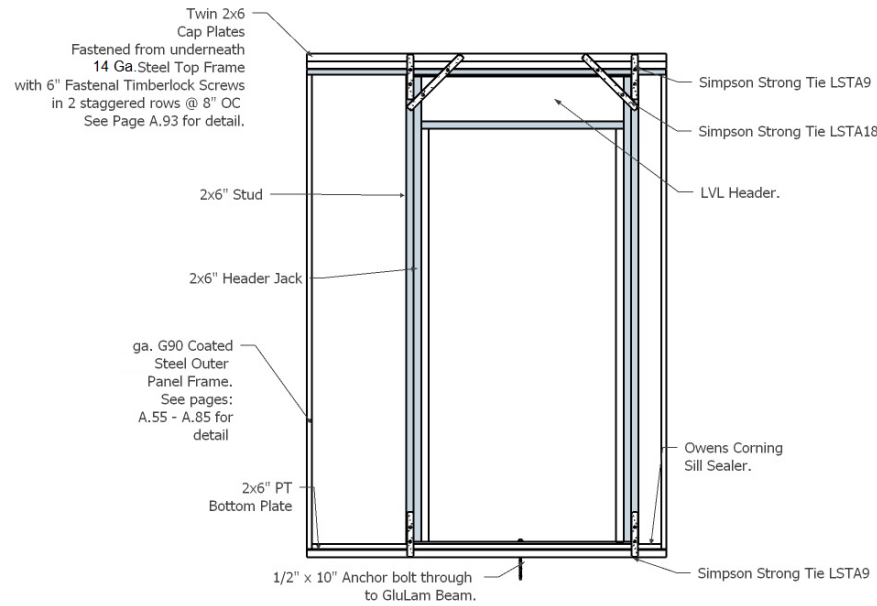
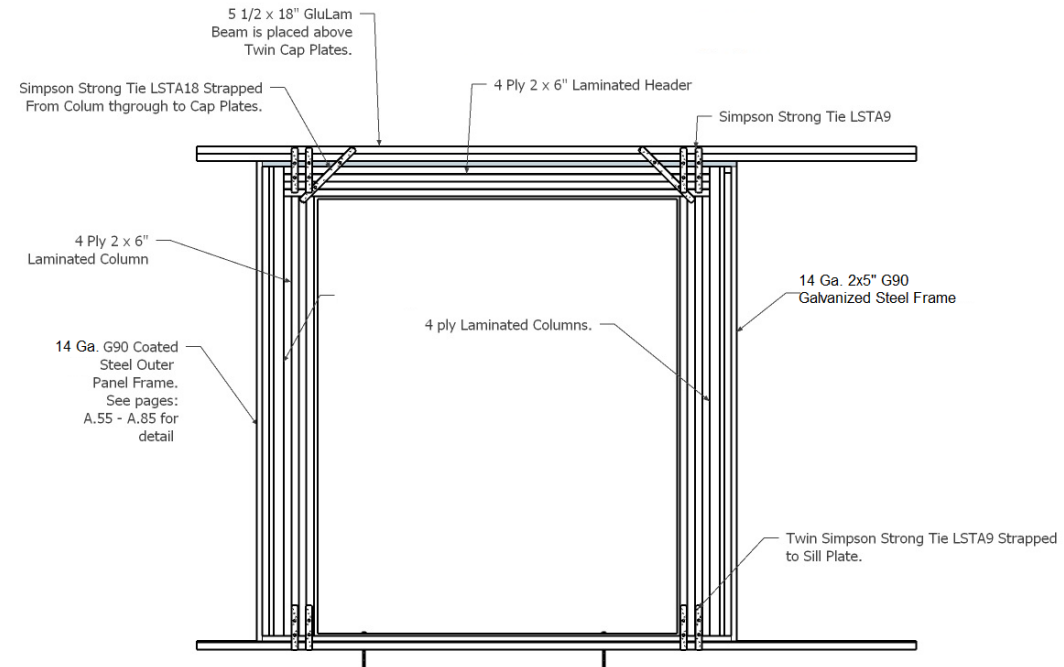
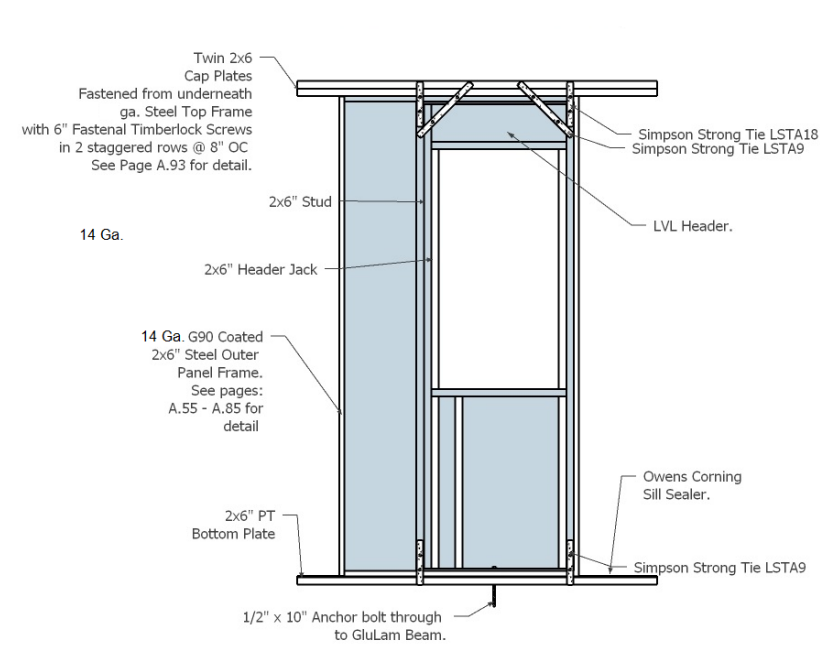


## BRACED PANELS

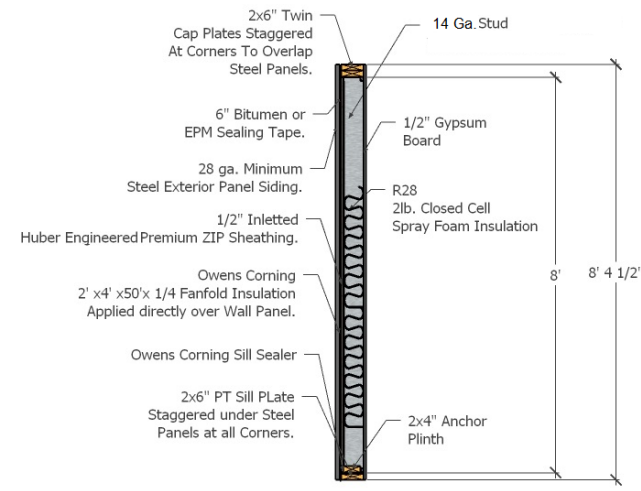
14 Ga. Steel ensures  
Exceptionally rigid,  
Construction, surpassing  
Conventional SPF framing.

No warping, checks, cracks or  
natural faults to compromise  
Structural load performance.

# TYPICAL PANEL HARDWARE APPLICATIONS

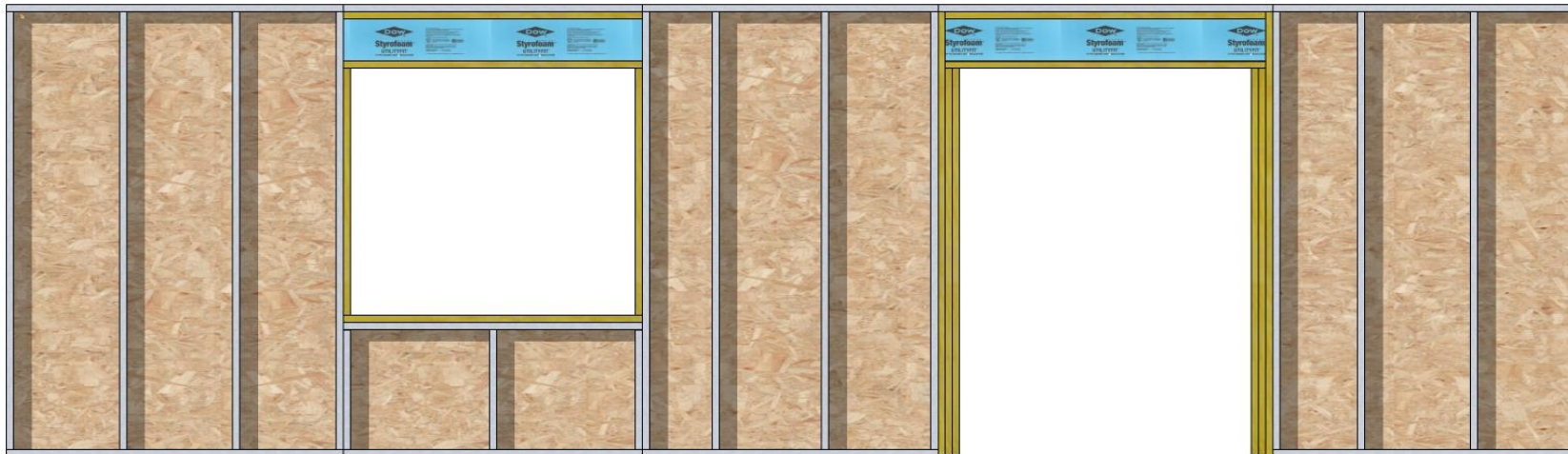


## CROSS SECTION OF TYPICAL WALL



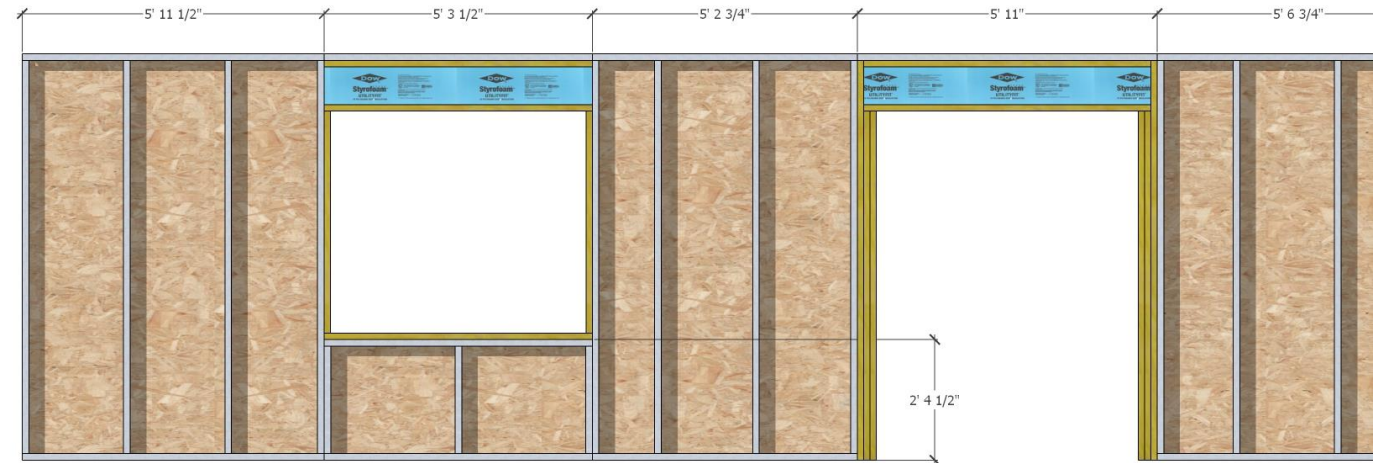
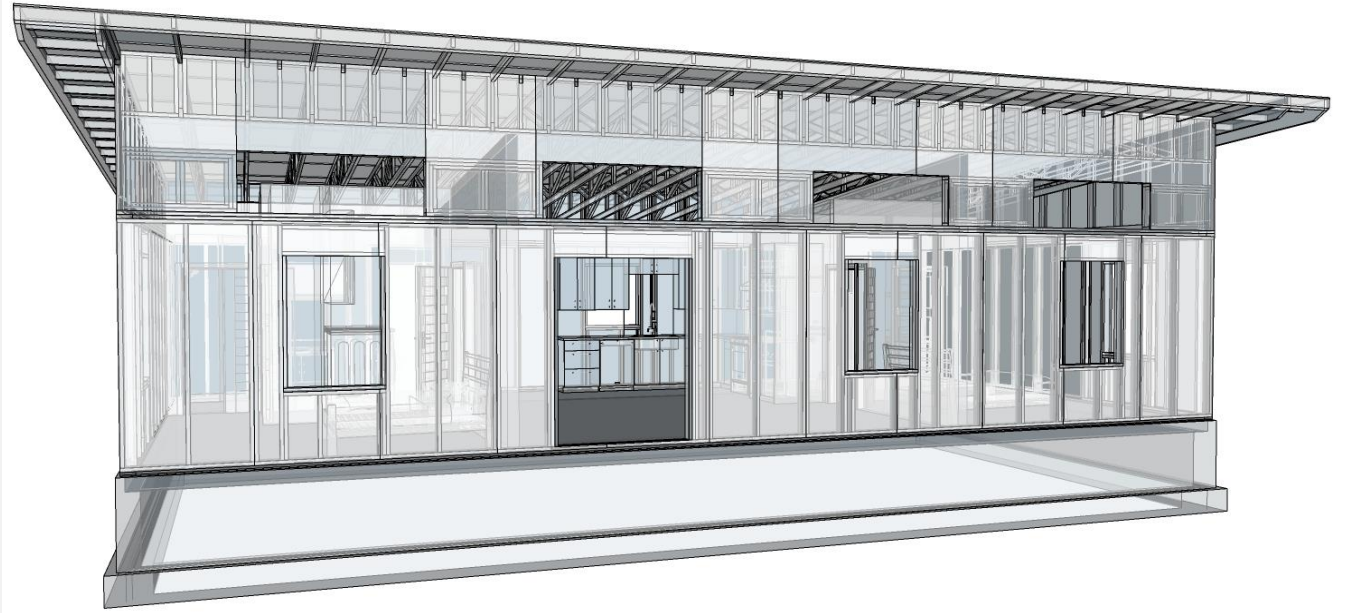


**ALL JACK AND CRIPPLE STUDS ARE SCREWED TO KING STUDS, AND  
RO'S ARE DIMENSIONAL 2X6" SPF WITH  
PRESSURE TREATED SILL PLATES. AL HEADERS ARE TWIN I 3/4"  
LVL'S WITH 1/2" OSB INSERT, OR LAMINATED,  
DIMENSIONAL SPF.**

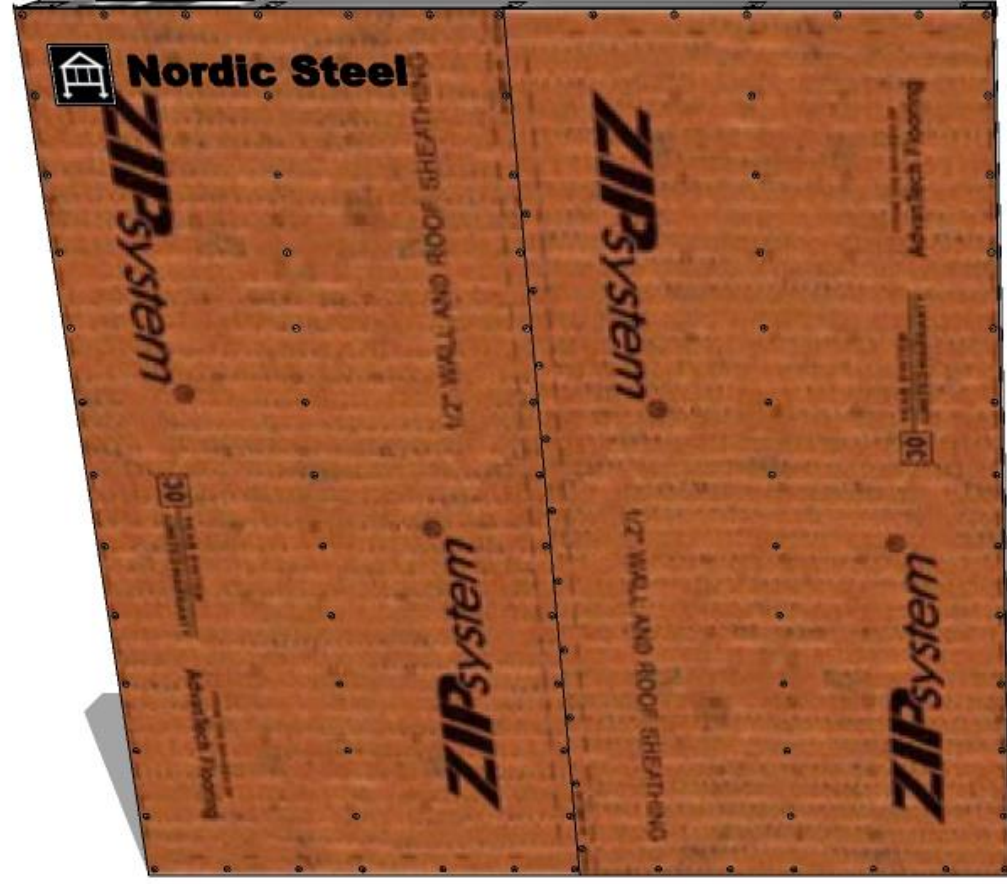


**ALL SUPERPANELS™ ARE FRAMED  
TO ACHIEVE MAXIMUM STRENGTH  
AND DIMENSIONAL PRECISION.**

- Panels are made using Advanced Framing, Optimal Value Engineering methods, spacing all load bearing studs and frames at no more than 24" OC.
- All Panels align to maintain frame on frame load bearing of all structural elements on all walls.





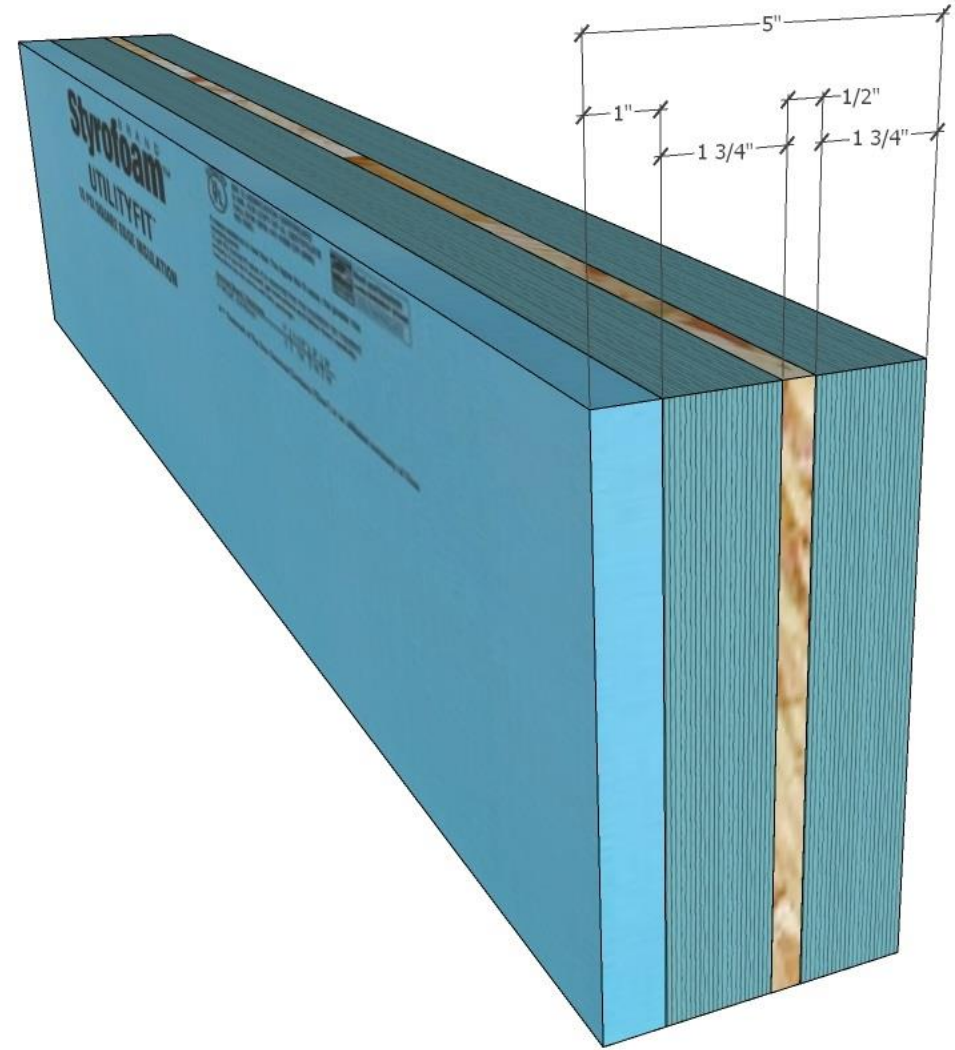




**All SuperPanels™ have dimensional and angular precision that surpasses on site framing, and are exceptionally easy to align and assemble, saving considerable time and labor.**



**HEADERS ARE  
TWIN LVL'S  
SANDWICHING  
1/2" OSB AND  
FACED WITH 1"  
DOW CORNING®  
RIGID FOAM**



**SUPERPANELS™ SCREWED TO ONE ANOTHER WITH IN DOUBLE OPPOSING, STAGGERED ROWS SPACED @ A MINIMUM 6” OC. 1/4"-14 X 1" DRIL-FLEX® STRUCTURAL SELF-DRILLING SCREWS, 3/8 HEX WASHER HEAD, #3 POINT, ALLOY STEEL WITH STALGARD SUB COATING,**

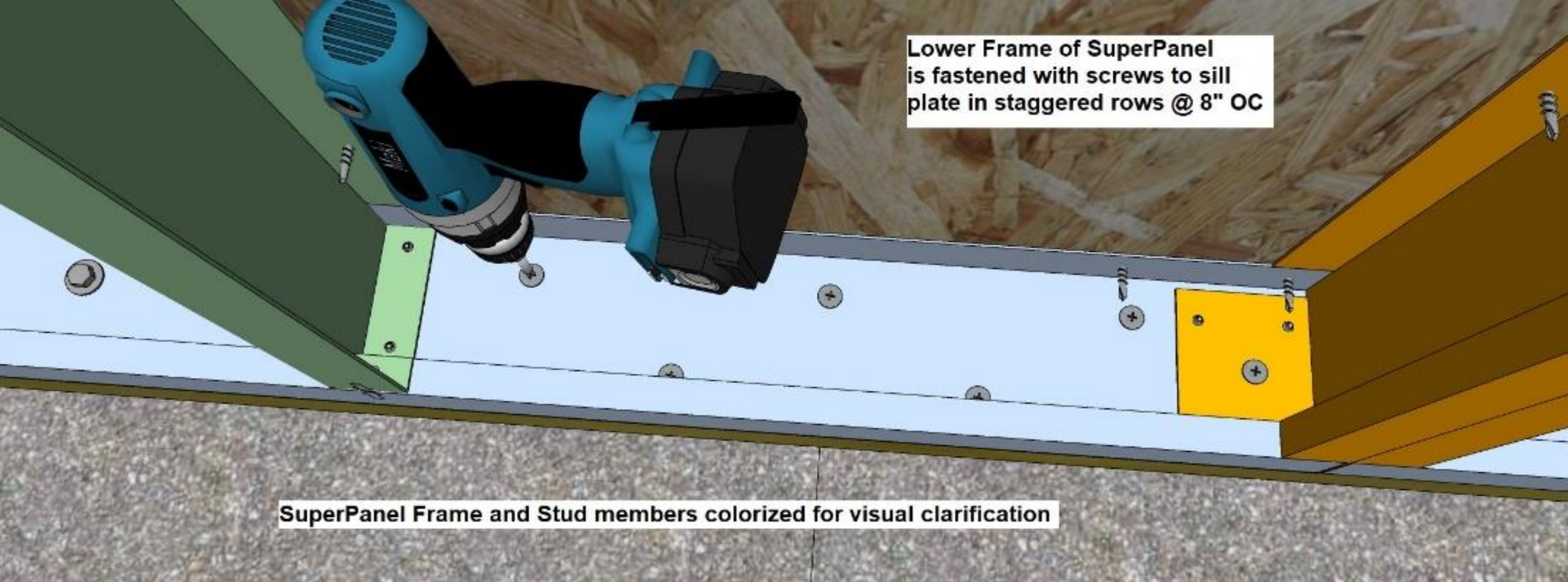
Product Type	Self-Drilling Structural Screw	
Material	Alloy Steel	
Diameter	1/4"	
Length	Finish	Stalgard SUB Coating
Drive Type	Source	Made in USA
Head Type		
Head Size	Load Bearing Area	.450"
Point Size		
	Approvals	ICC-ES ESR-3332, COLA Research Report #25095



Each SuperPanel™ is fastened to the other by counter faced, staggered rows of self drilling, steel screws. Each row is set @ 16" On Center, staggered to achieve a fastening distance of 8" On Center from opposing sides.





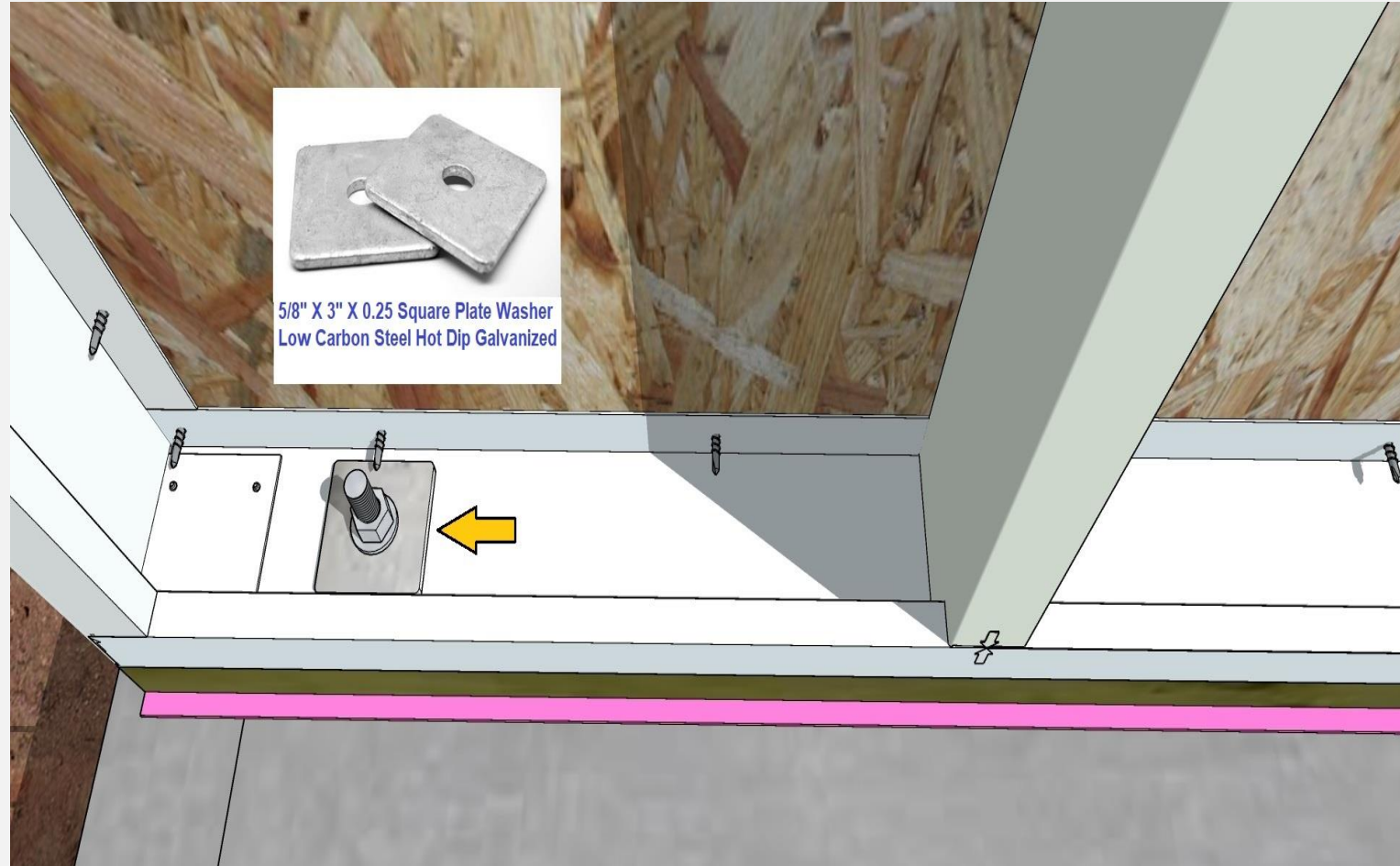
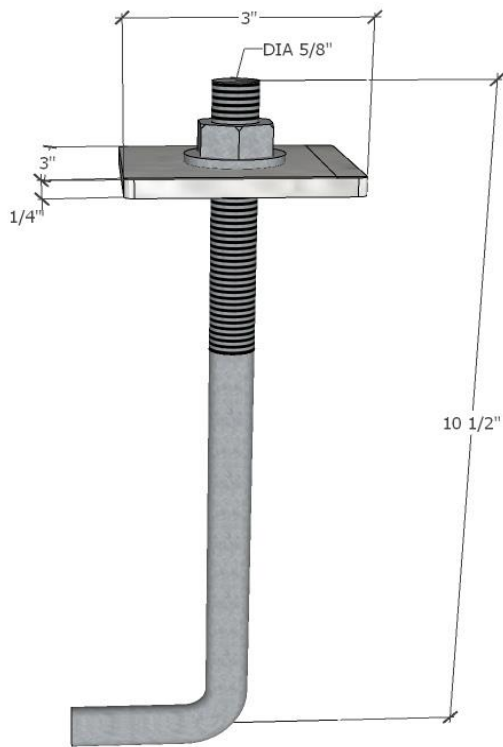


Lower Frame of SuperPanel  
is fastened with screws to sill  
plate in staggered rows @ 8" OC

SuperPanel Frame and Stud members colorized for visual clarification

**THESE ARE ALSO SCREWED TO THE TREATED  
SILL PLATE AS SHOWN, A SCREW IS PLACED  
ON EVERY STUD & SIDE FRAME FLANGE.**

WET SET CONCRETE AB  
WITH 5/8" DIAMETER,  
3"X3"X.25" SQUARE PLATE  
HOT DIP GALVANIZED  
WASHERS SET AT NO MORE  
THAN 6'OC



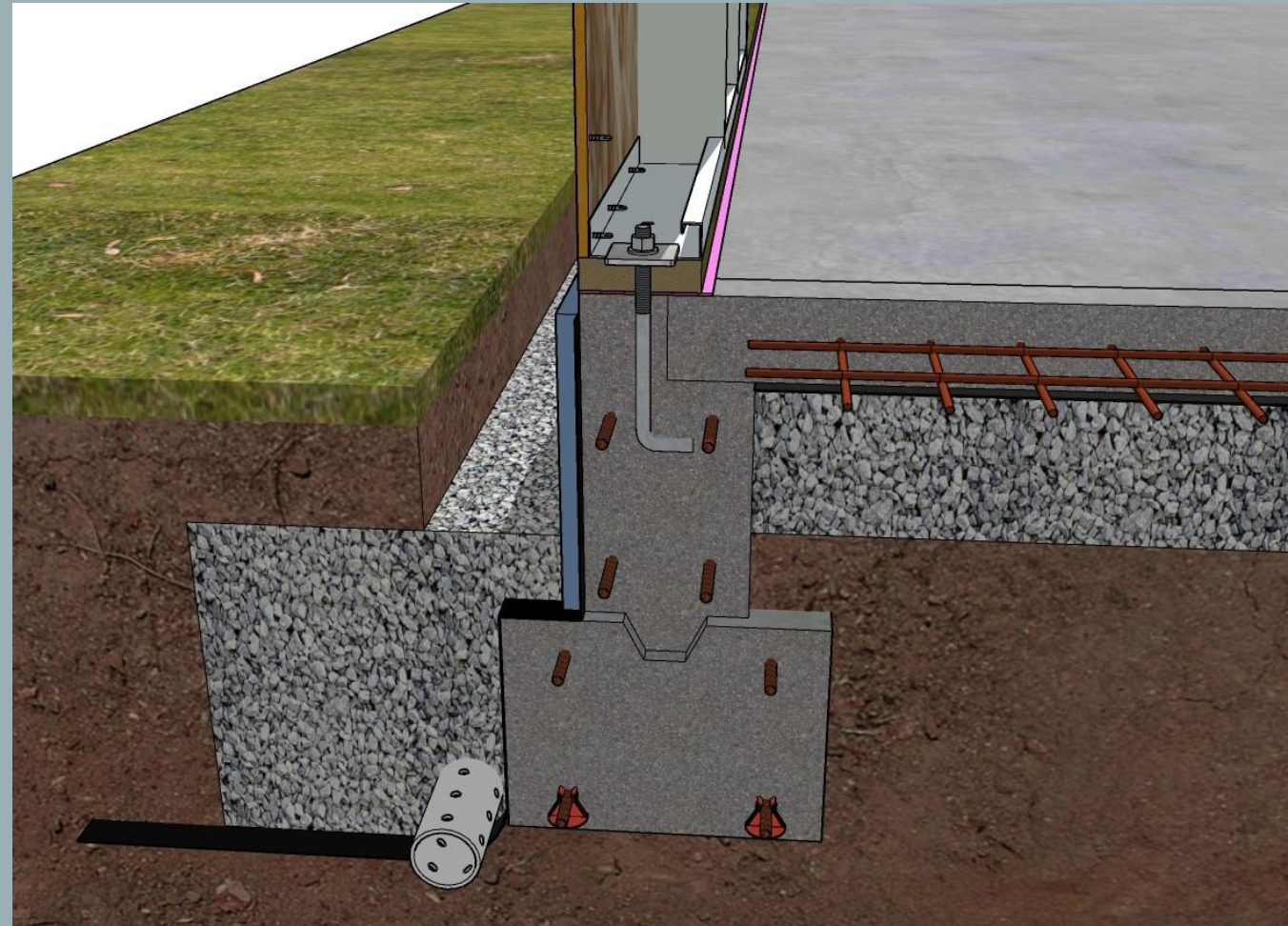
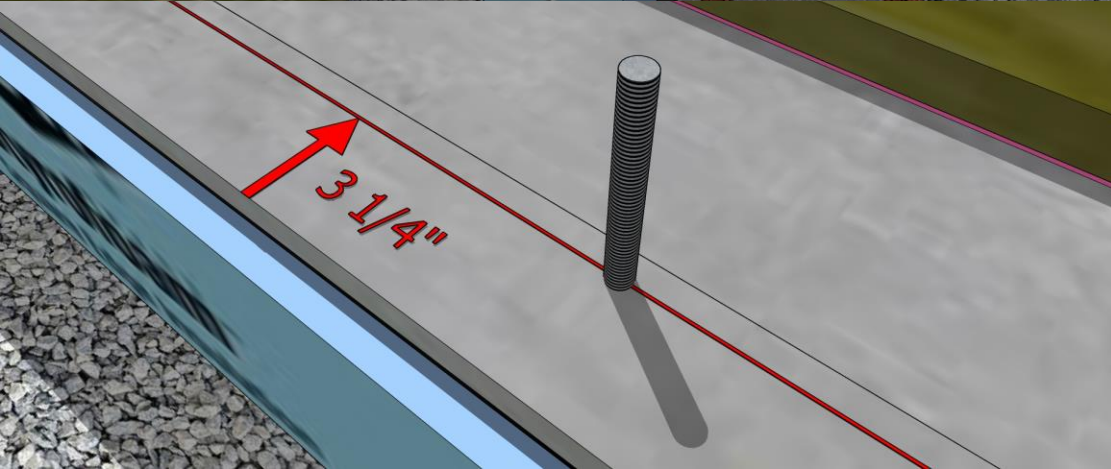
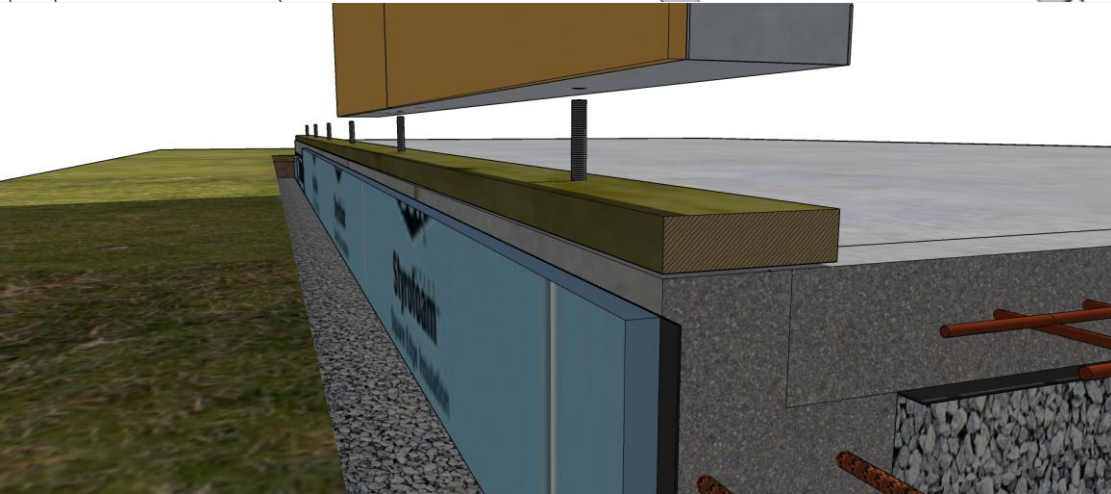
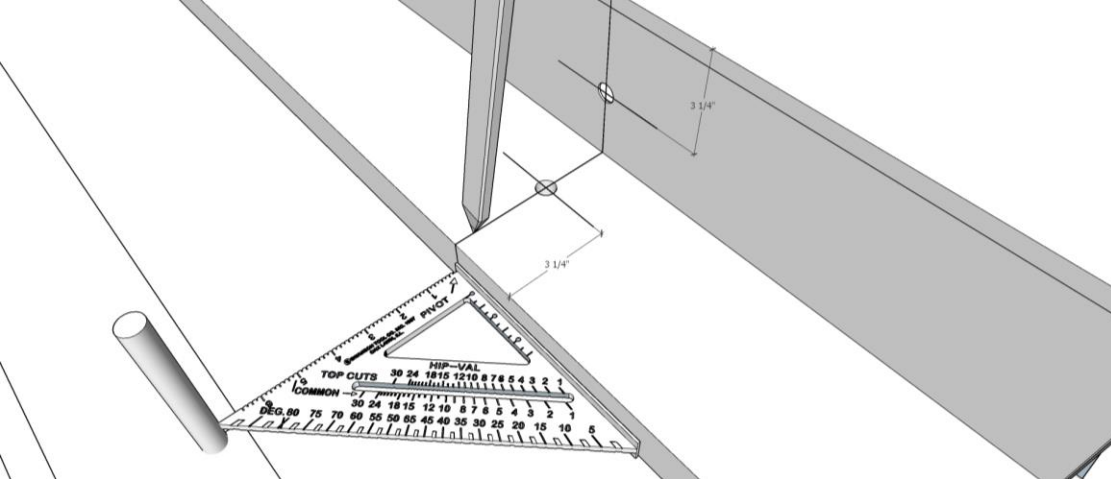




ALL WET SET ANCHOR BOLTS  
SET A MAX 8" FROM ANY SUPERPANEL® STUD OR  
FRAME SIDE



ANCHOR BOLT HOLES ARE  
DRILLED AT JOB SITE





**SUPERPANELS™** IS SET UPON WET SET ANCHOR BOLTS,  
READY TO BE FASTENED TO SILL PLATE AND CONCRETE  
FOUNDATION.



All Steel Studs and Frames Align to opposite walls @ 2' OC

