



A quick guide to SuperPanel Installation.

Build it Greener, Build it Faster, Build it Better,
Build it for Less.



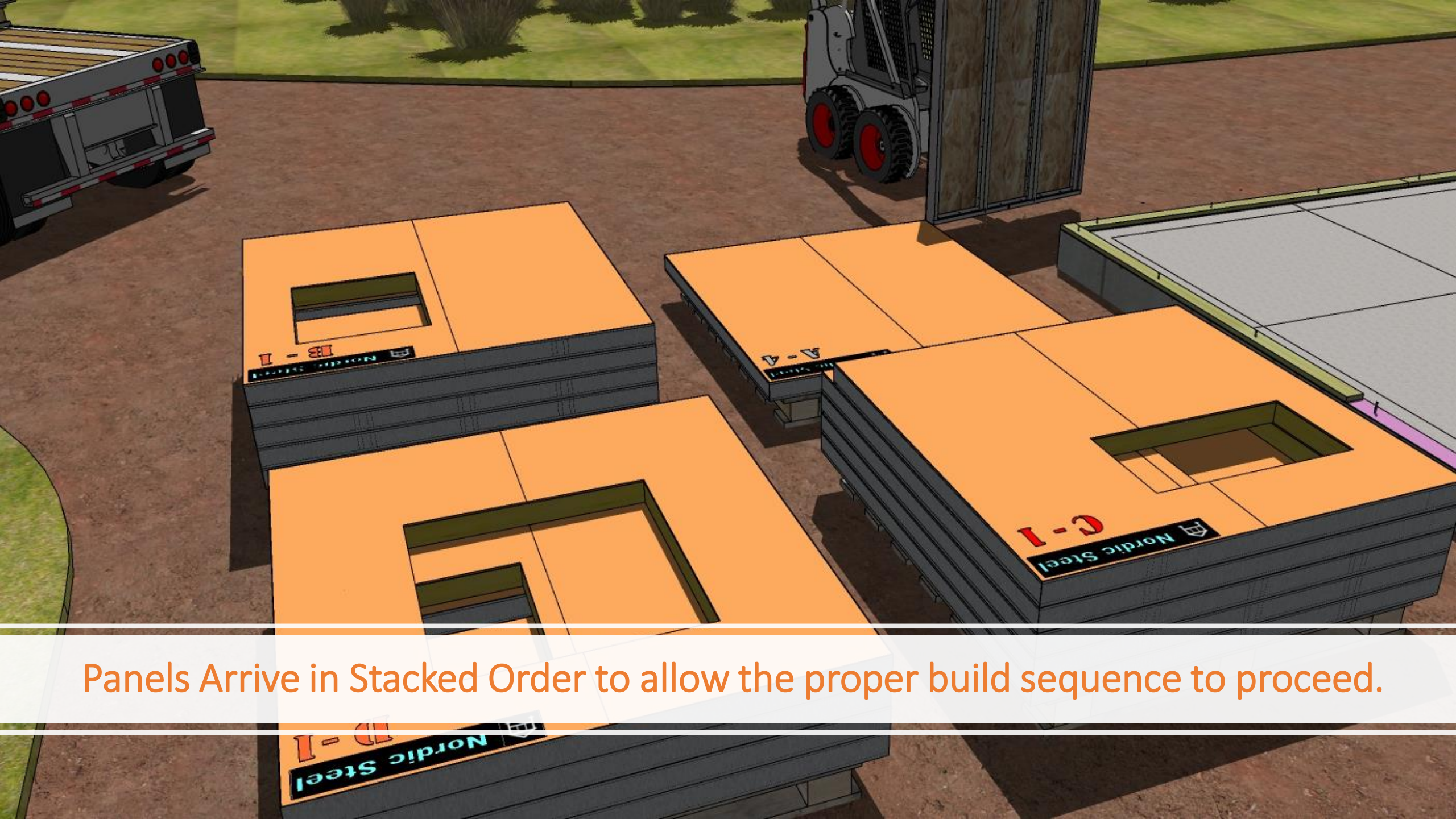
Your Panels arrive.

Welcome to Home Building in the 21st Century!

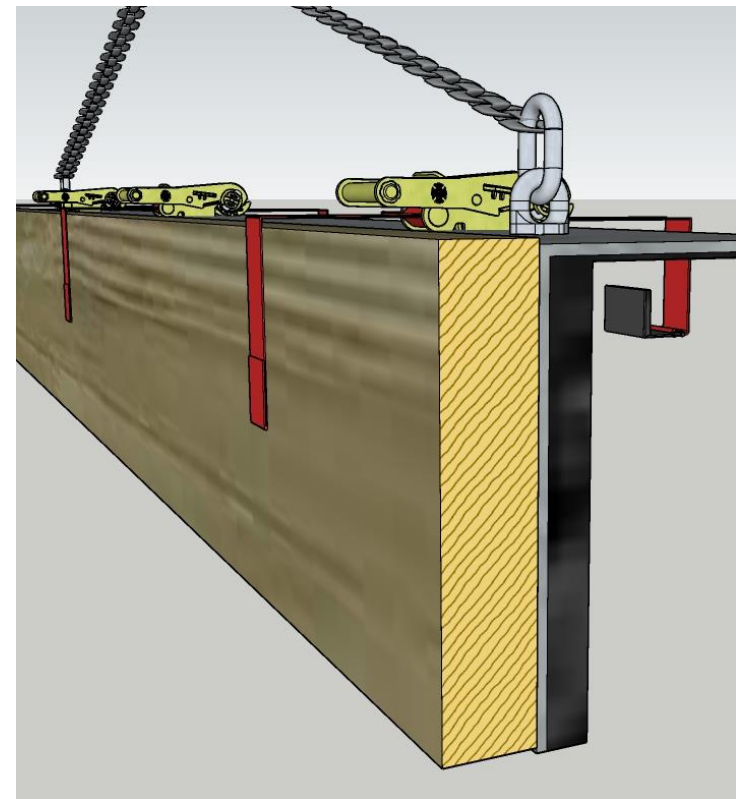
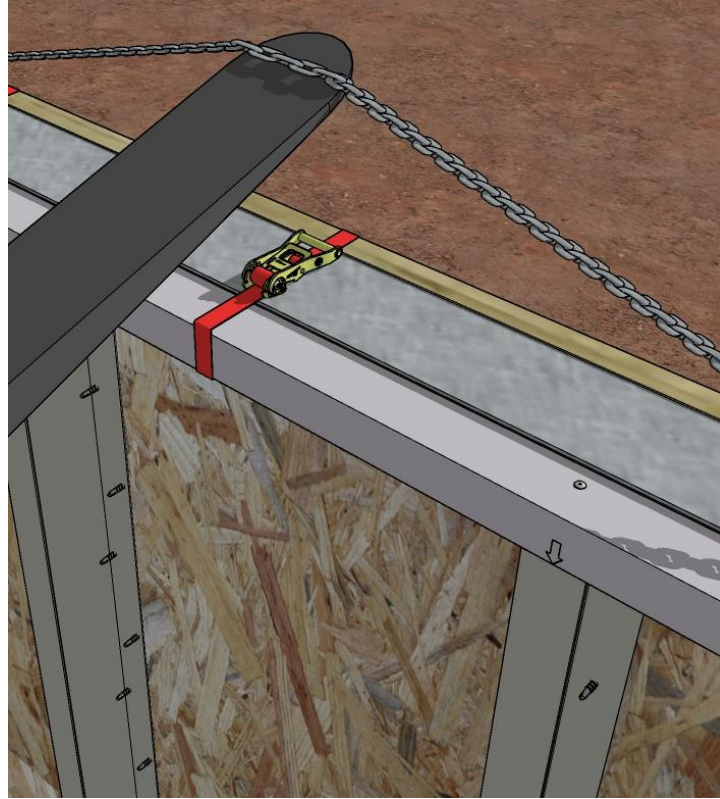
Your whole structural wall package arrive ready to be immediately installed.



All SuperPanels are stacked in predetermined, sequential order, with alpha-numeric coding to eliminate guesswork.



Panels Arrive in Stacked Order to allow the proper build sequence to proceed.



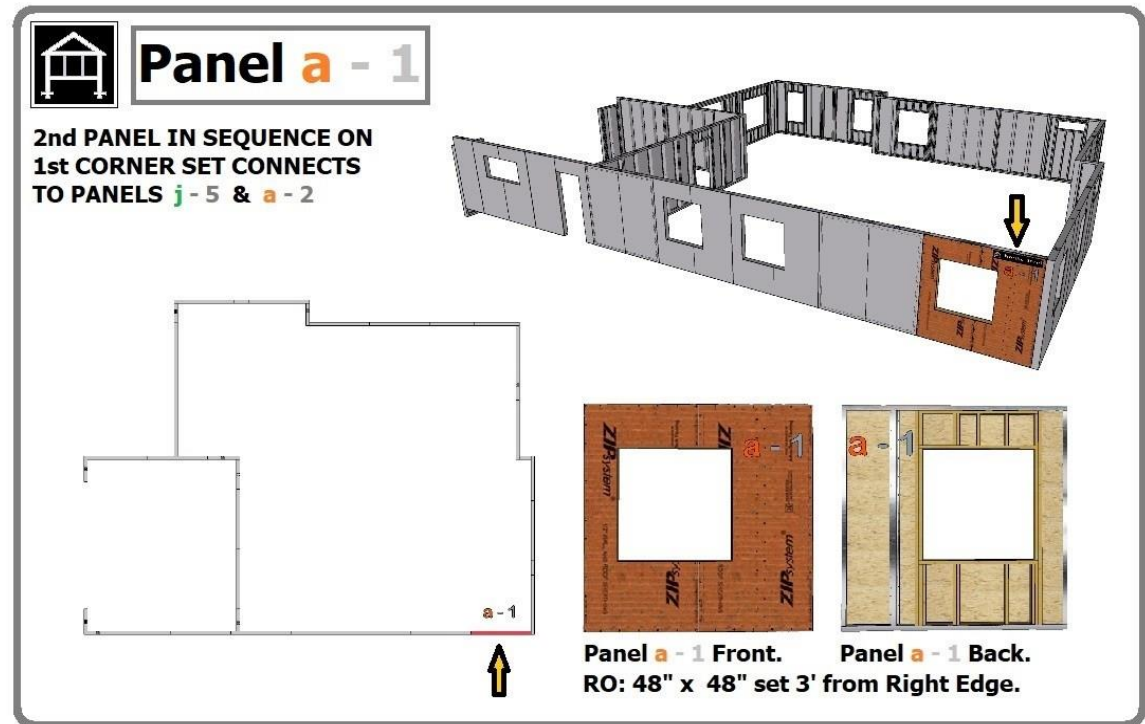
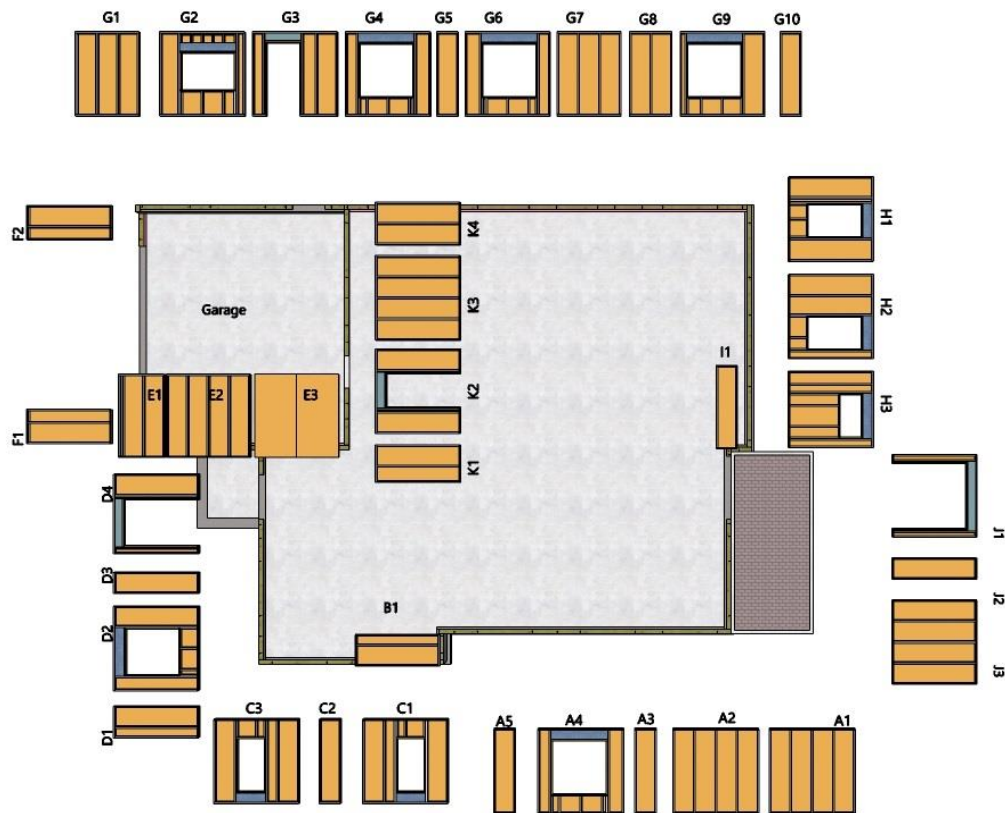
We also provide a lift/spreader bar to assist SuperPanel installation.



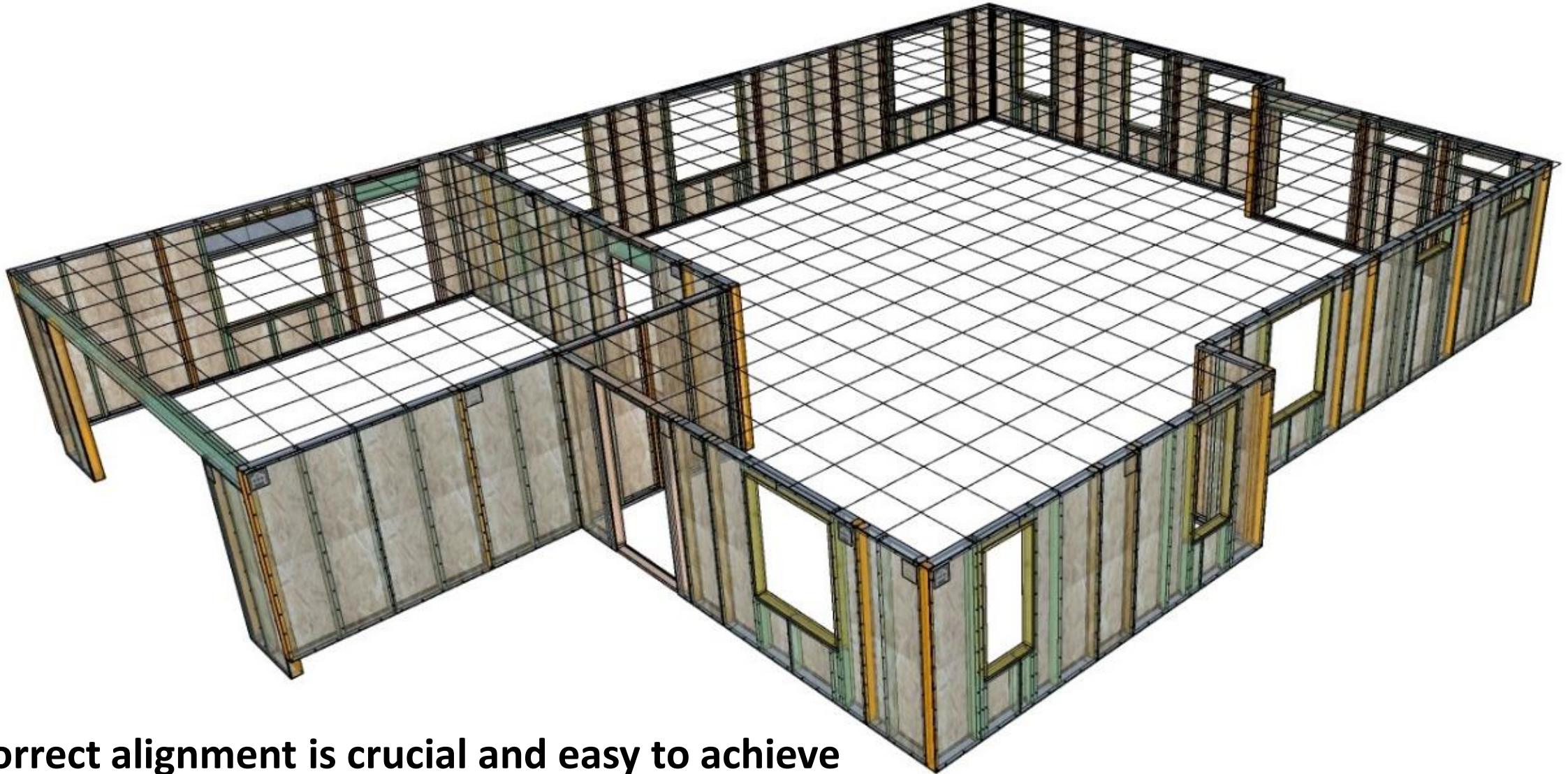
Each SuperPanel Stack corresponds to an individual wall.

- Although some may be interchangeable, all SuperPanels are made to fit precisely within a specific location within each wall section, no panel placement thing is ambiguous, saving considerable time & effort.

Each SuperPanel™ has a panel identifier that acts as a visual aid and makes its location clear and easily understood.



All Steel Studs and Frames Align to opposite walls @ 2' OC

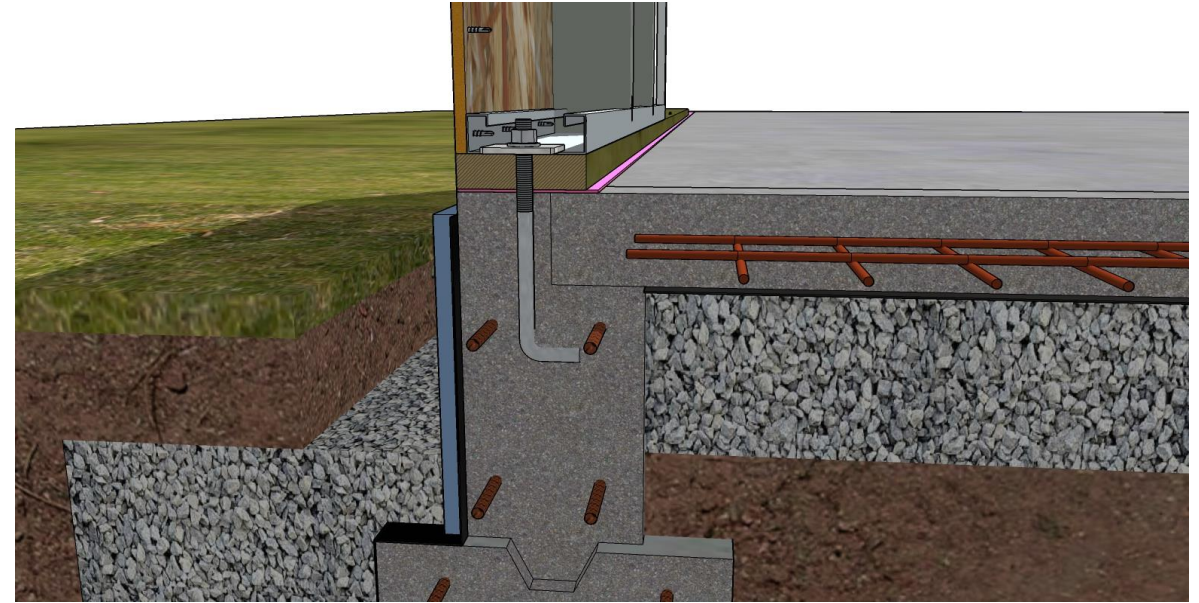
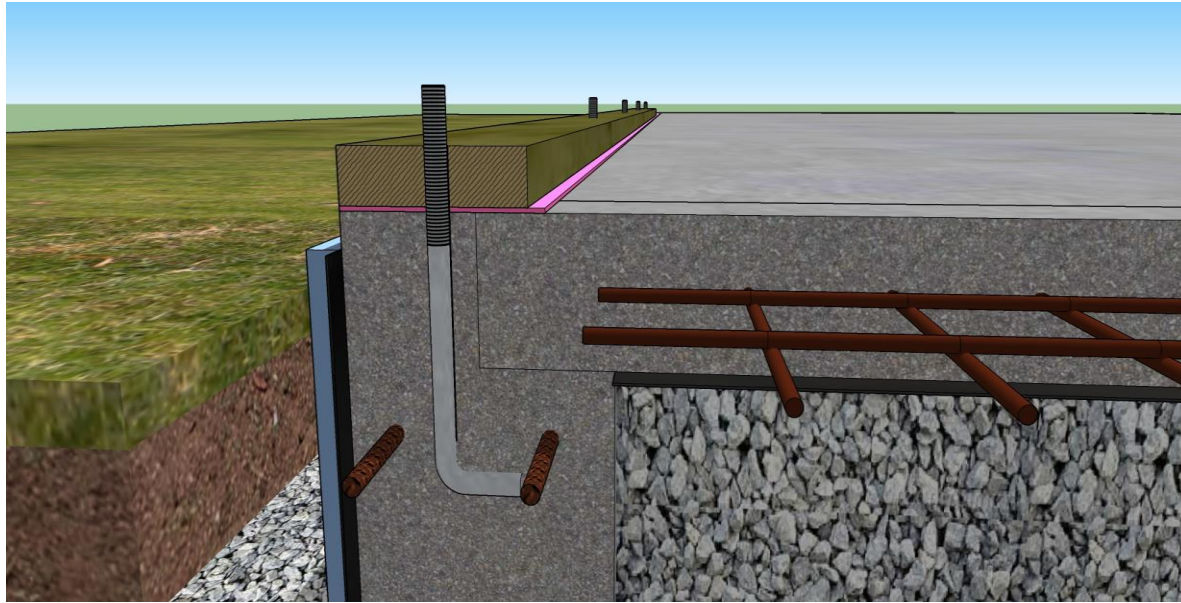


Correct alignment is crucial and easy to achieve

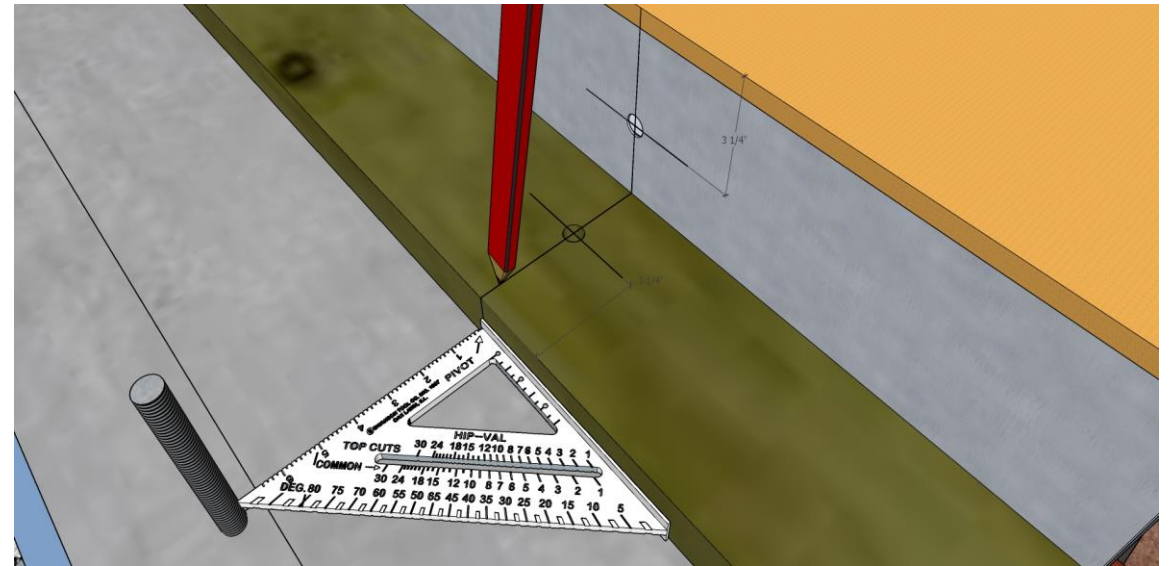
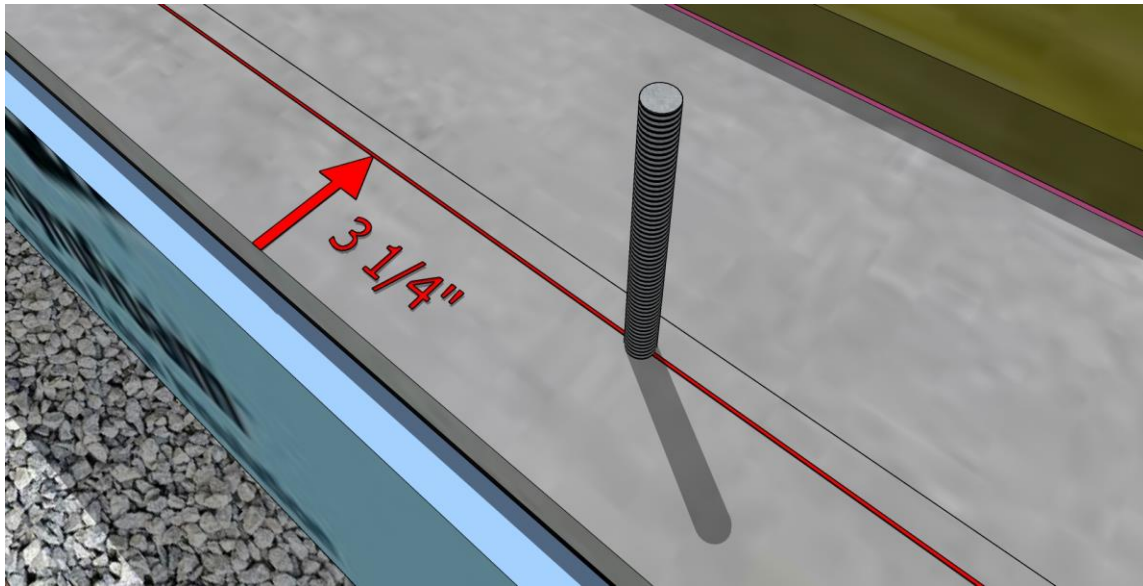


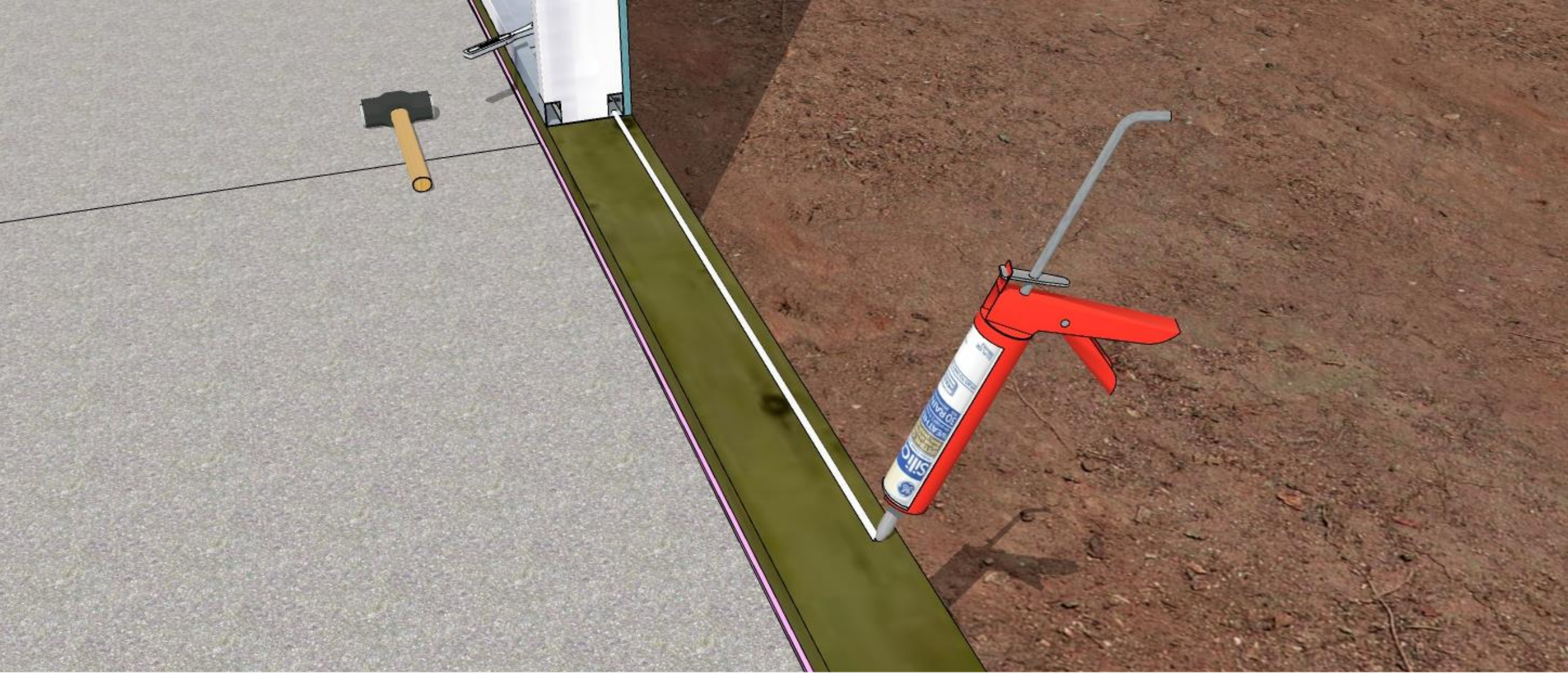
- What we carefully pre-build at our factory, makes the onsite build a much-improved process that significantly benefits both the builder and end user.

Whether a slab on grade or wood foundation system
the SuperPanel is bolted firmly through the sill plate in the same manner used in old
fashioned wood framing

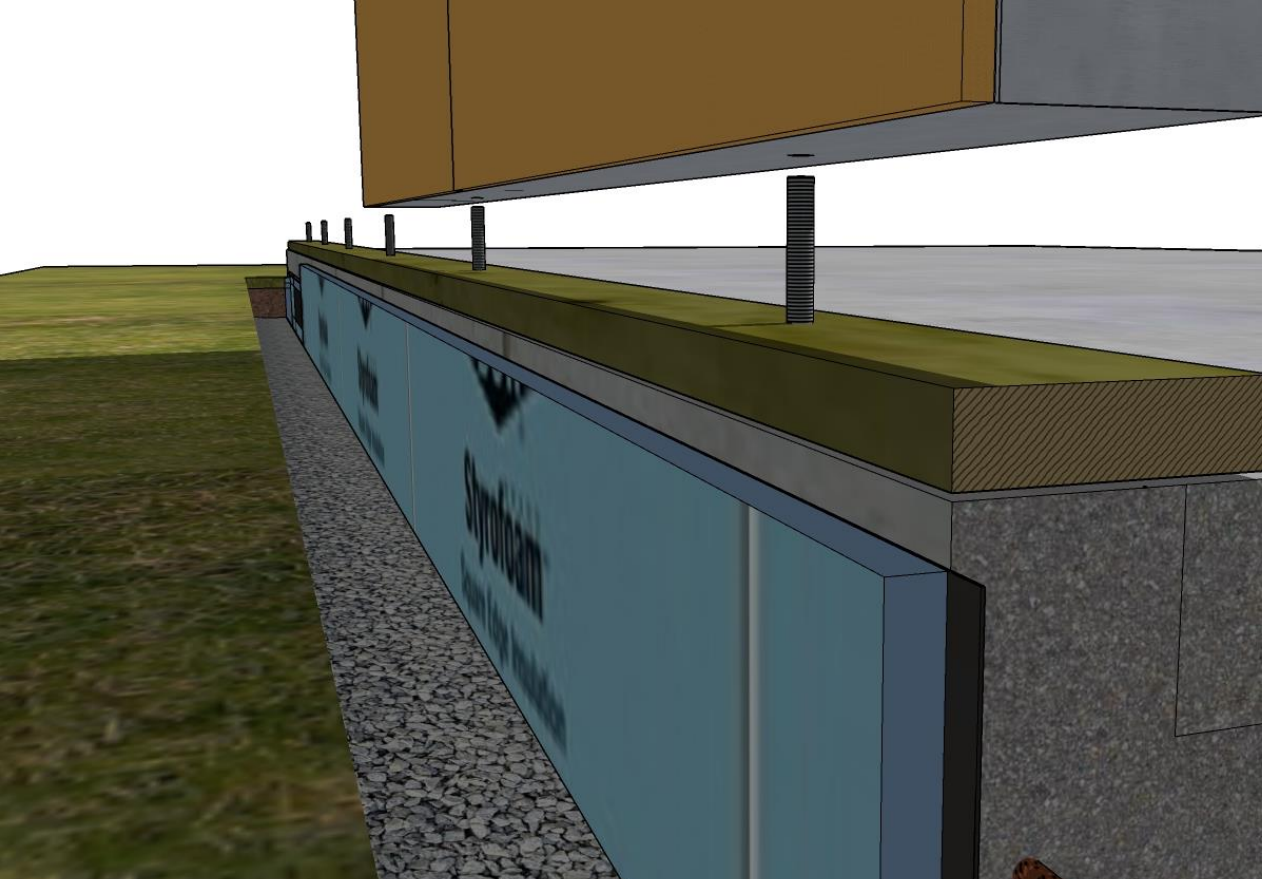


Anchor Bolts need to be embedded into concrete, 3 ¼" from outside edge at code required intervals. To accurately transfer the sill and SuperPanel hole locations, use a reliable speed square to transfer their location.



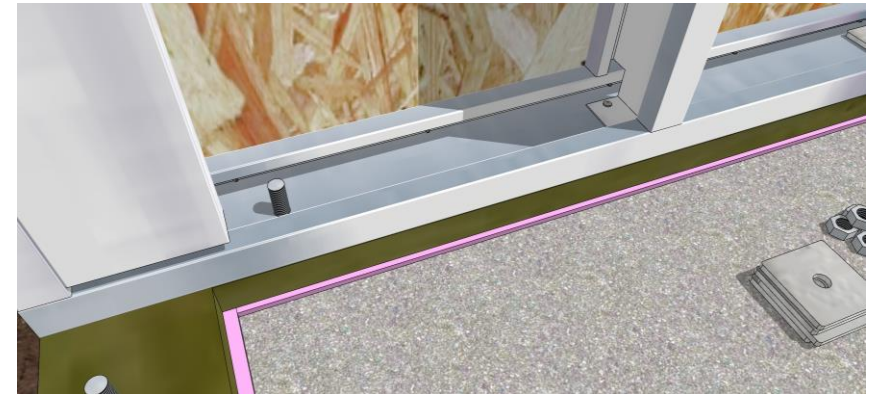
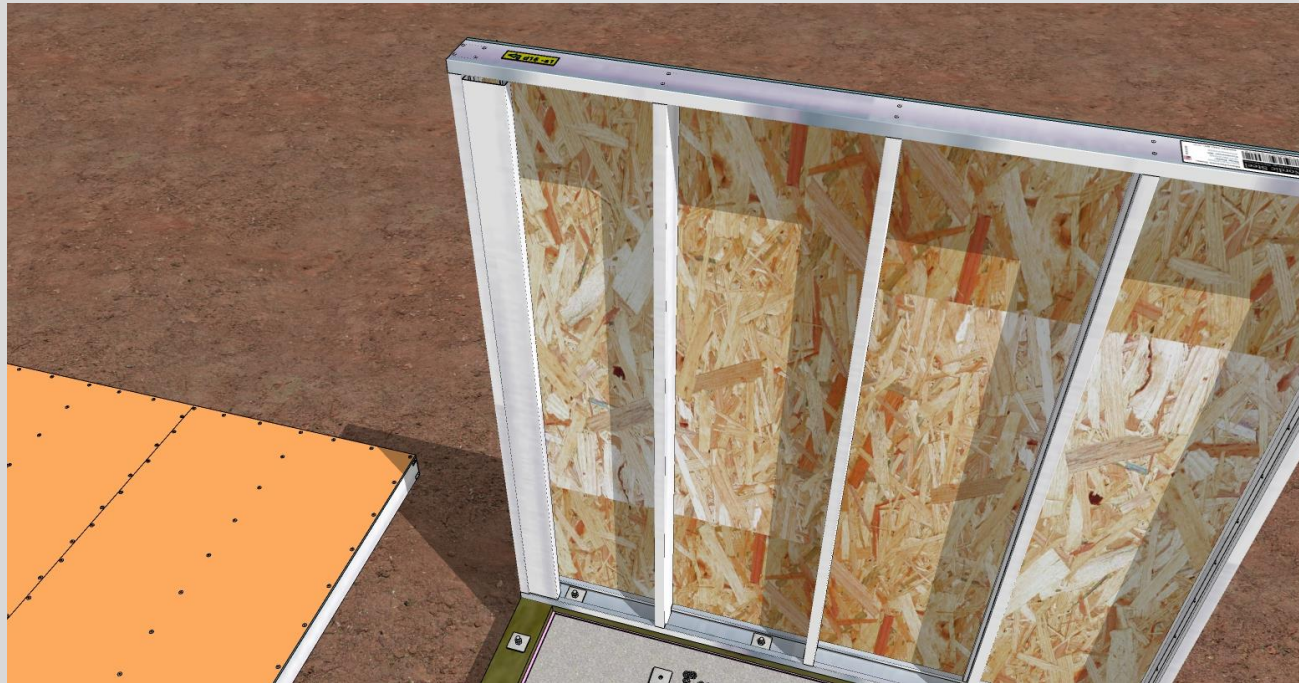


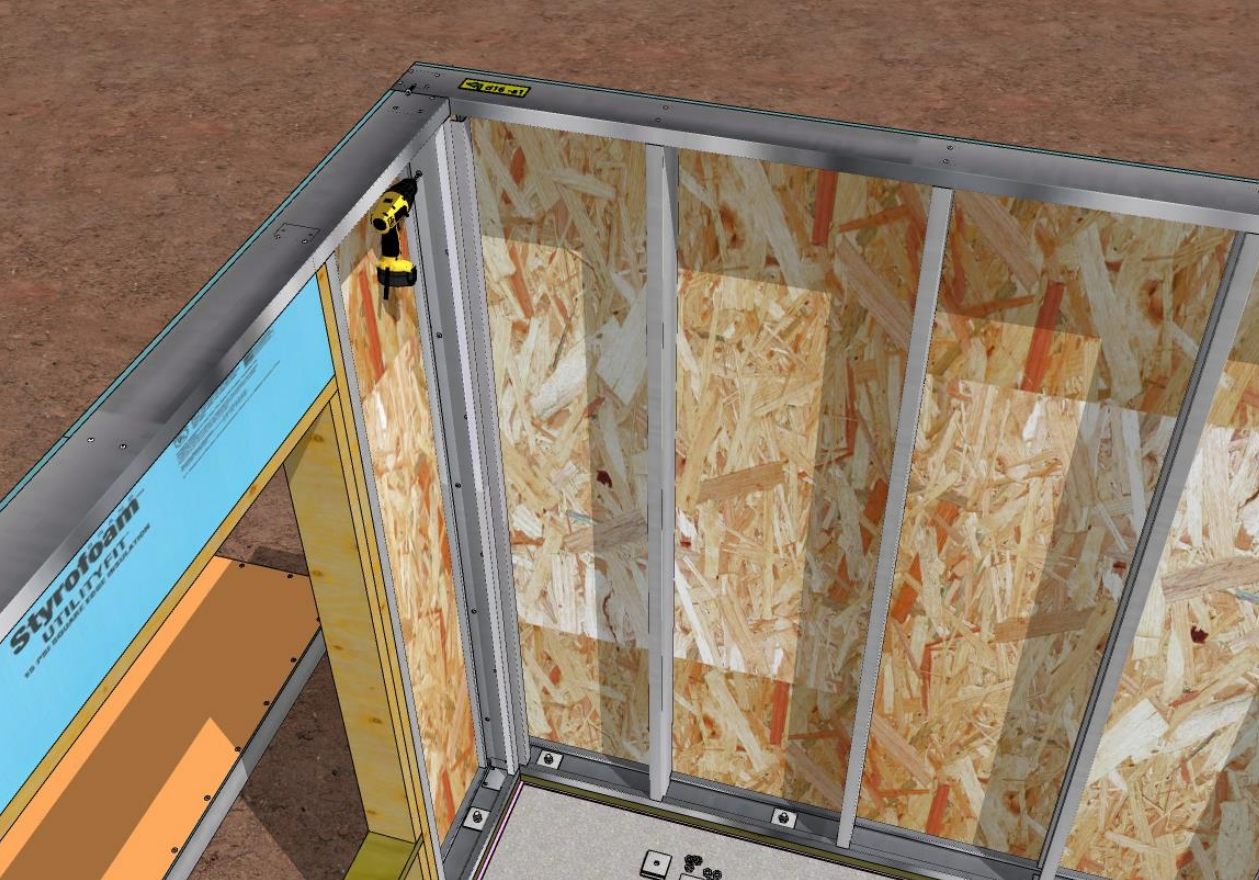
Run a bead of 100% Silicone, 1" from the outside edge of the sill plate.



Lower SuperPanel onto anchor bolts and sill plate.

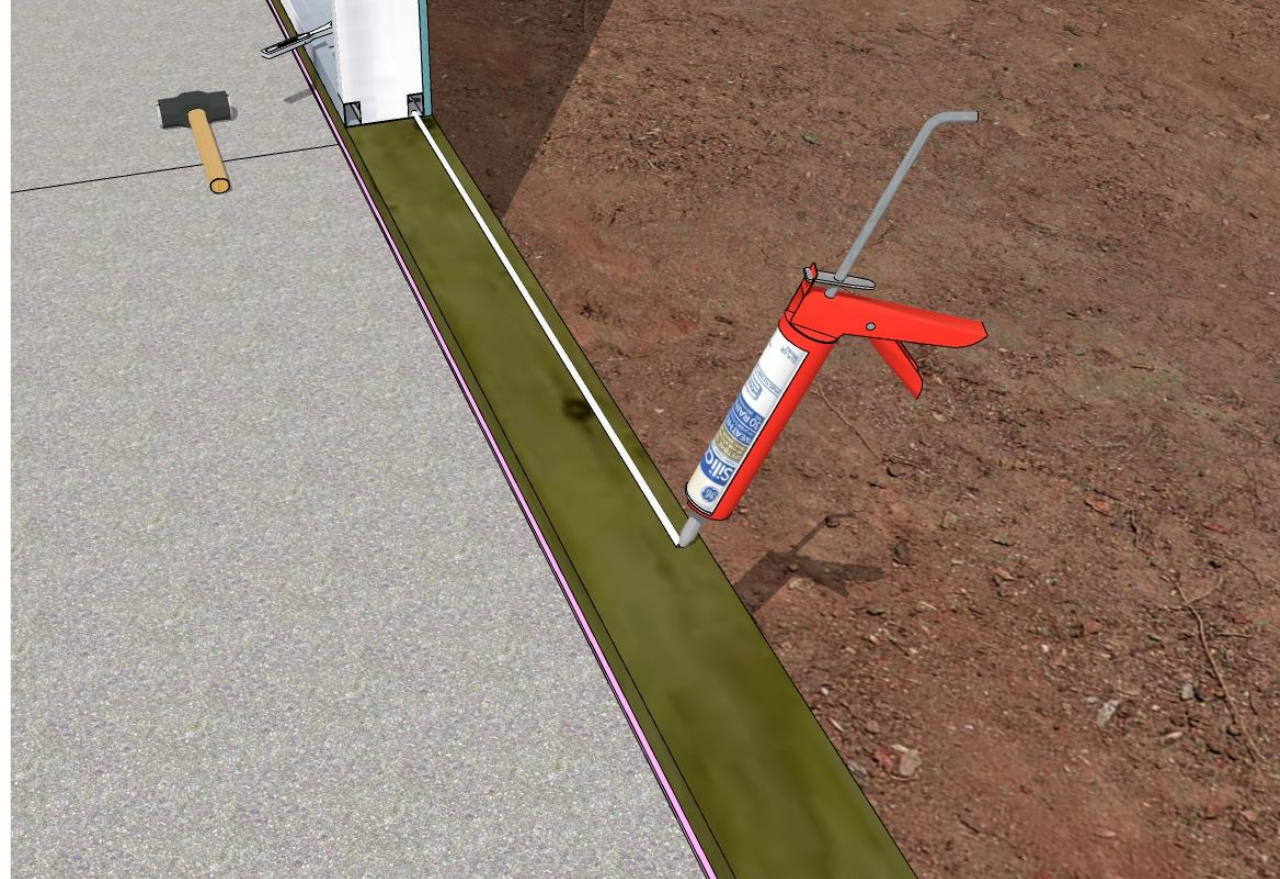
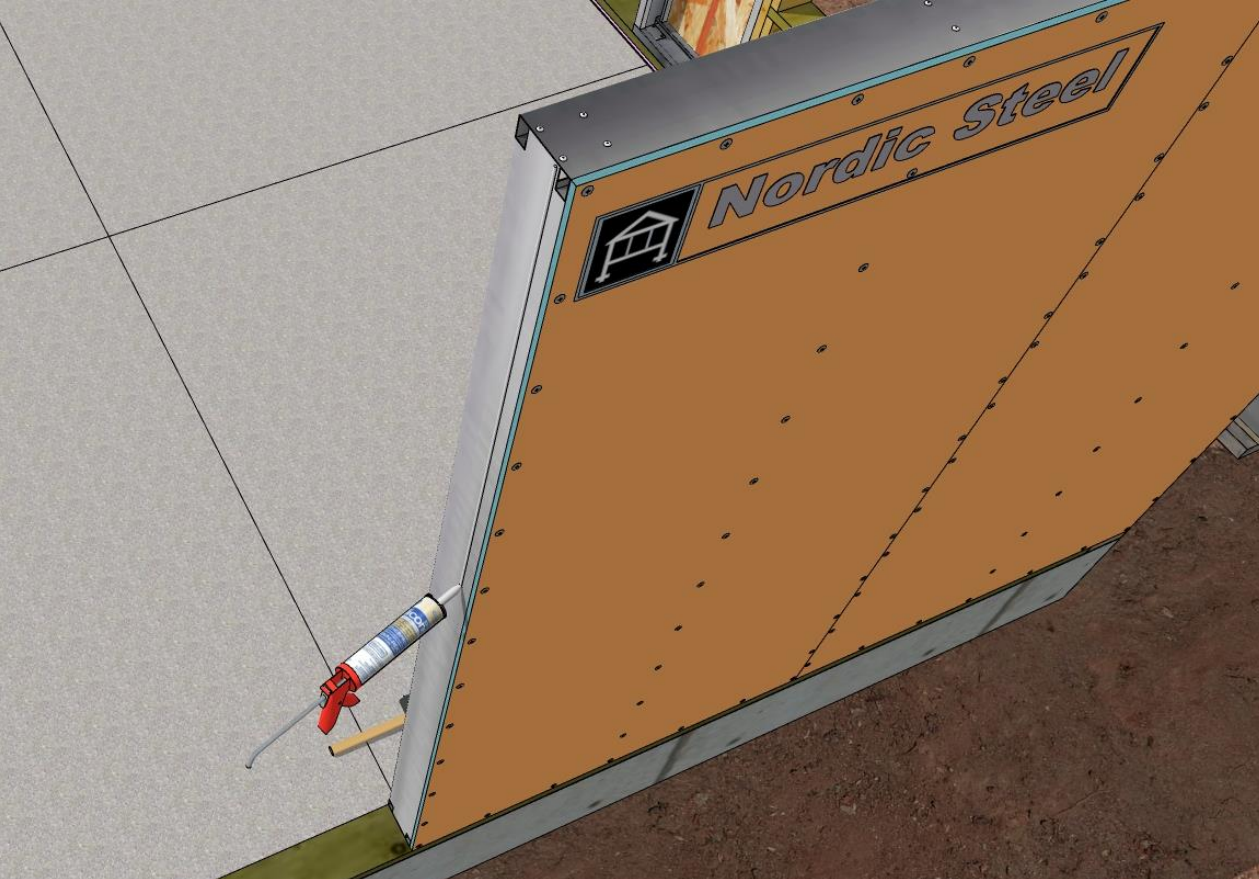
Use 3"x 3" x ¼" Galvanized square washers to secure the bottom plate of the SuperPanel to foundation sill plate.



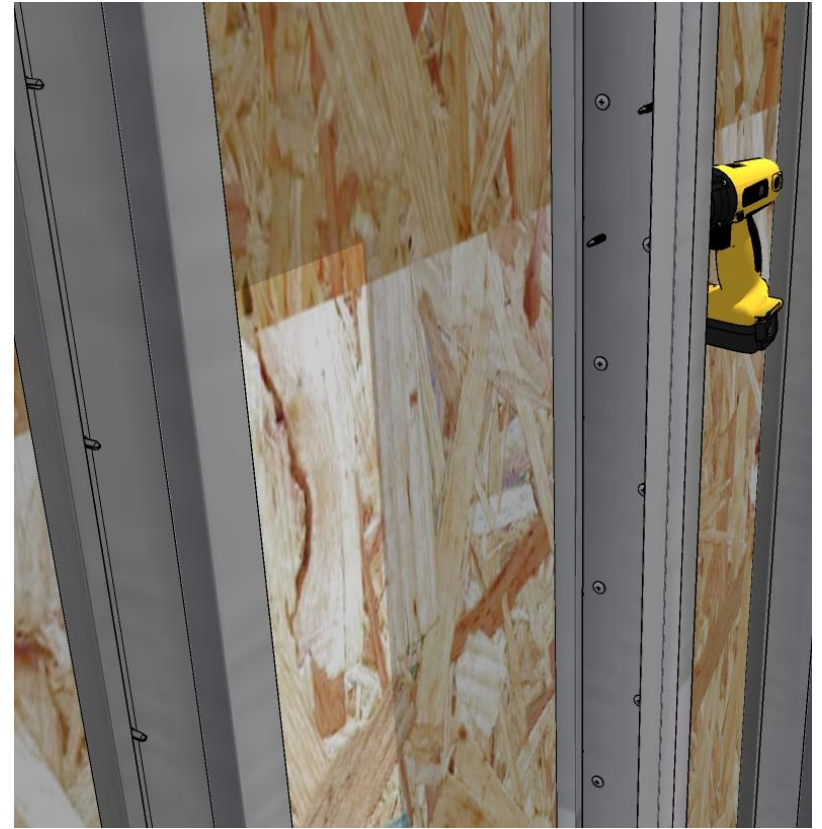


Set up your first corner to provide support to the first wall to be erected.

Fasten corner of panels with 2 staggered rows, set 2 ½ apart and spaced @ 8" OC. Make sure to properly align both panels, once square, they remain square, the inside, sheet rock lip acts as a handy guide.

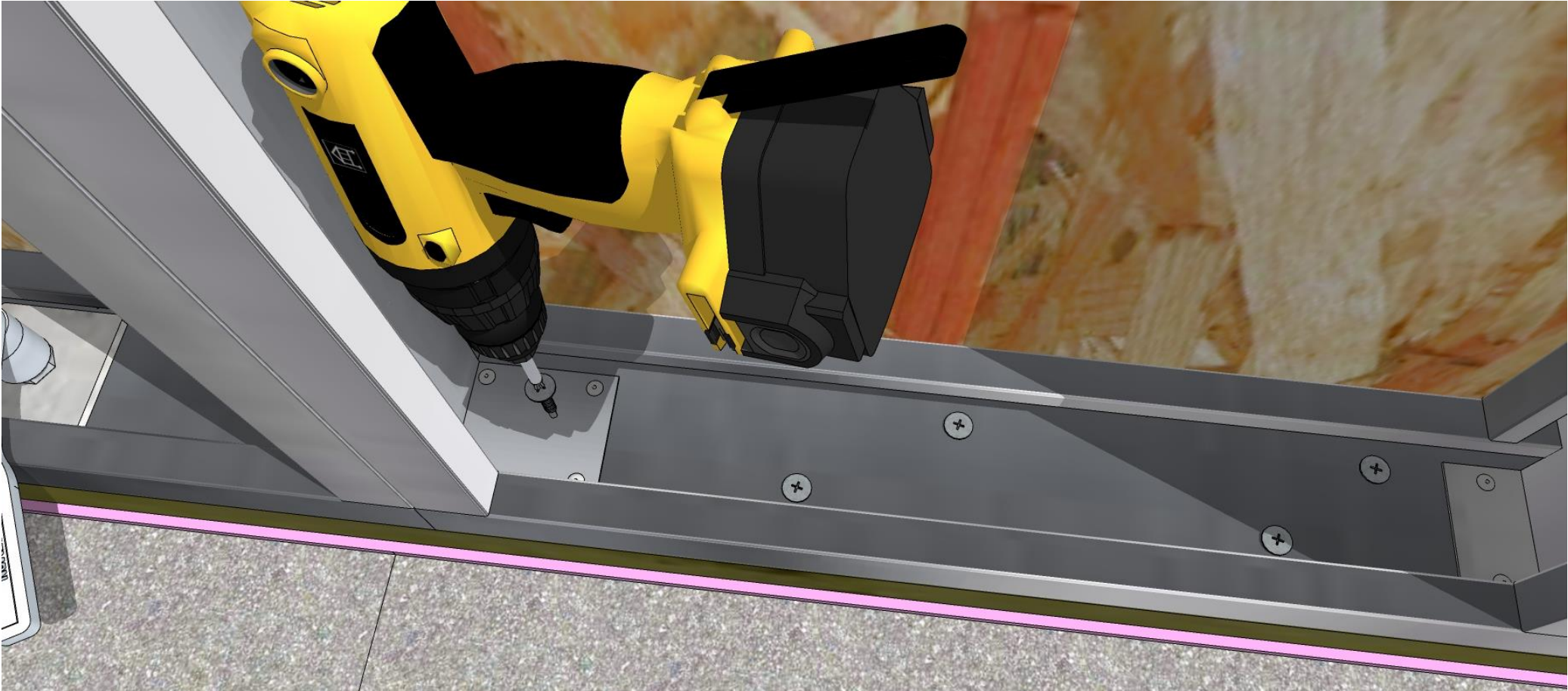


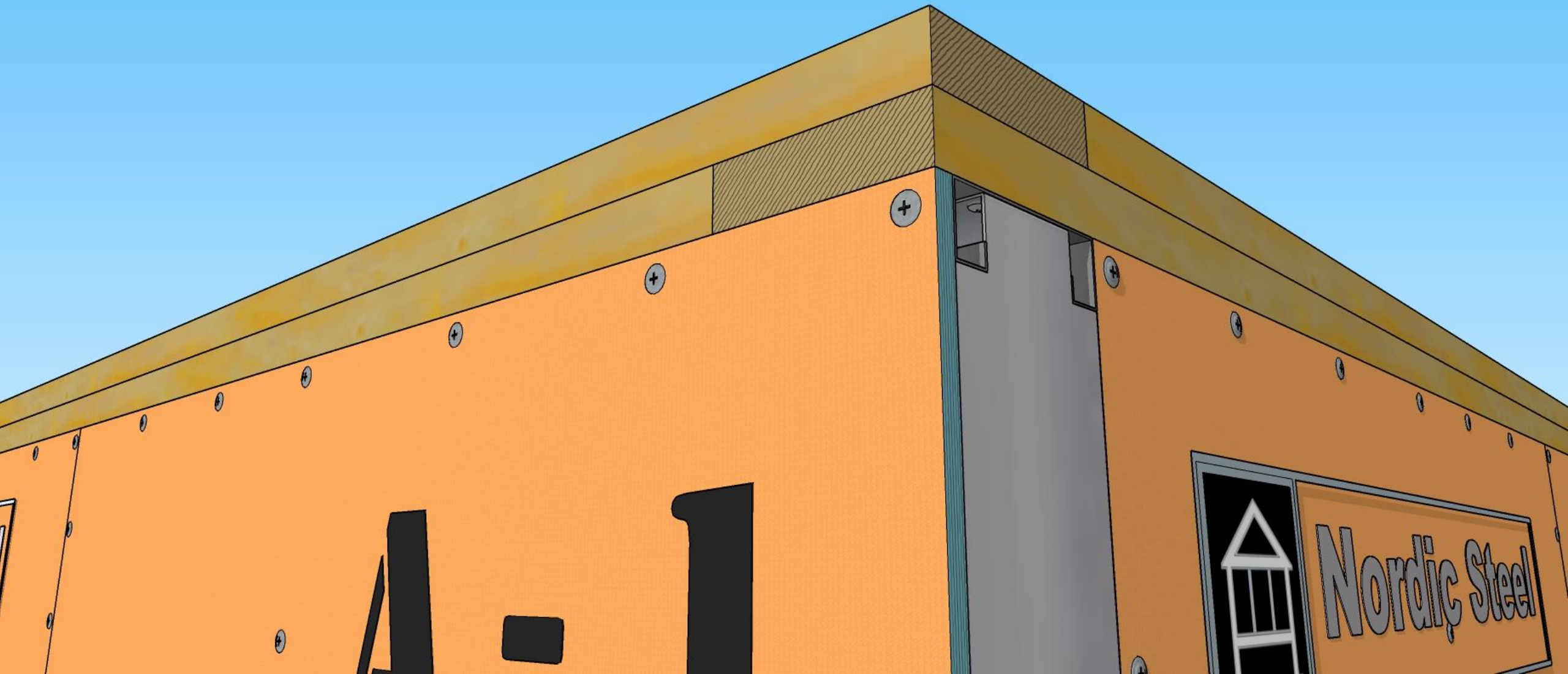
As with the previous panel, apply a bead of 100% Silicone to sill plate and edge of SuperPanel no more than 1" from outside edges.



Fasten SuperPanels together with 2 staggered rows of screws, one on each opposite side set 2" apart and @ 8" OC .

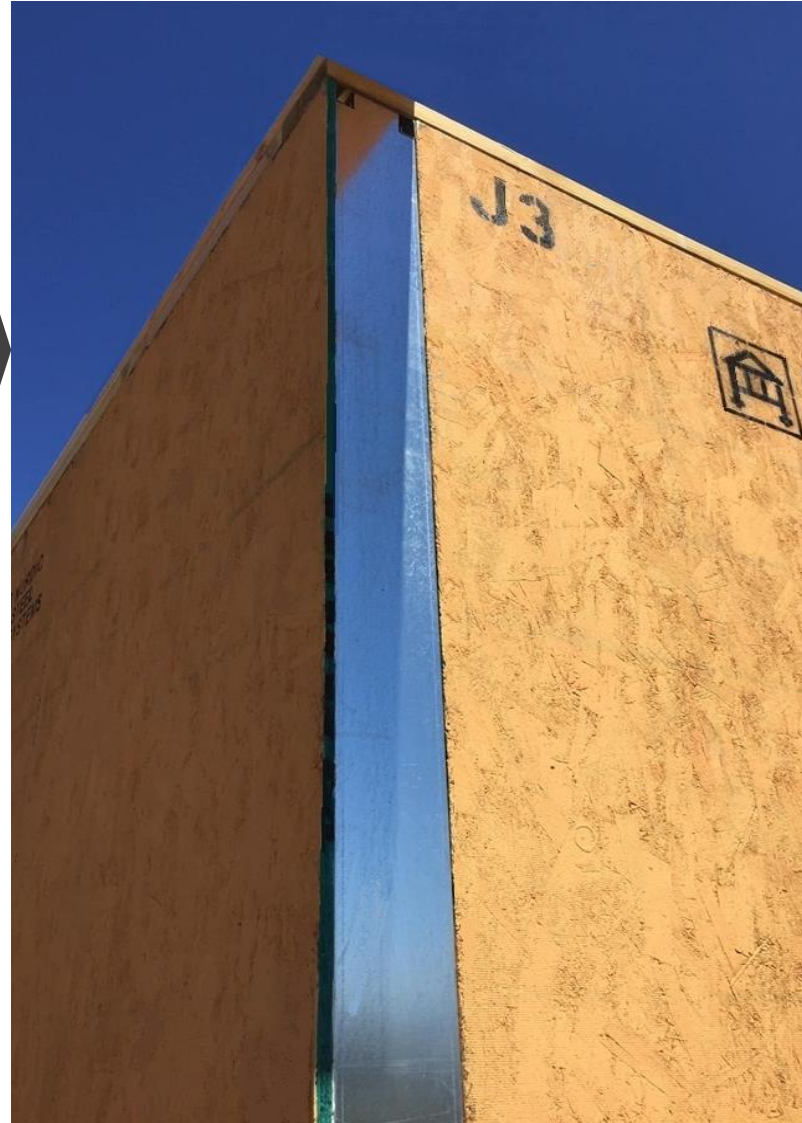
Run 2 staggered rows of screws into sill plate through bottom of SuperPanel set 2 ½" apart, 8 – 10 " OC.





Twin, overlapping 2 x 6" Cap Plates are attached as soon as a corner is established and no less than 16' of wall erected. The first row of Cap Plates overlaps the corner, panel joint.

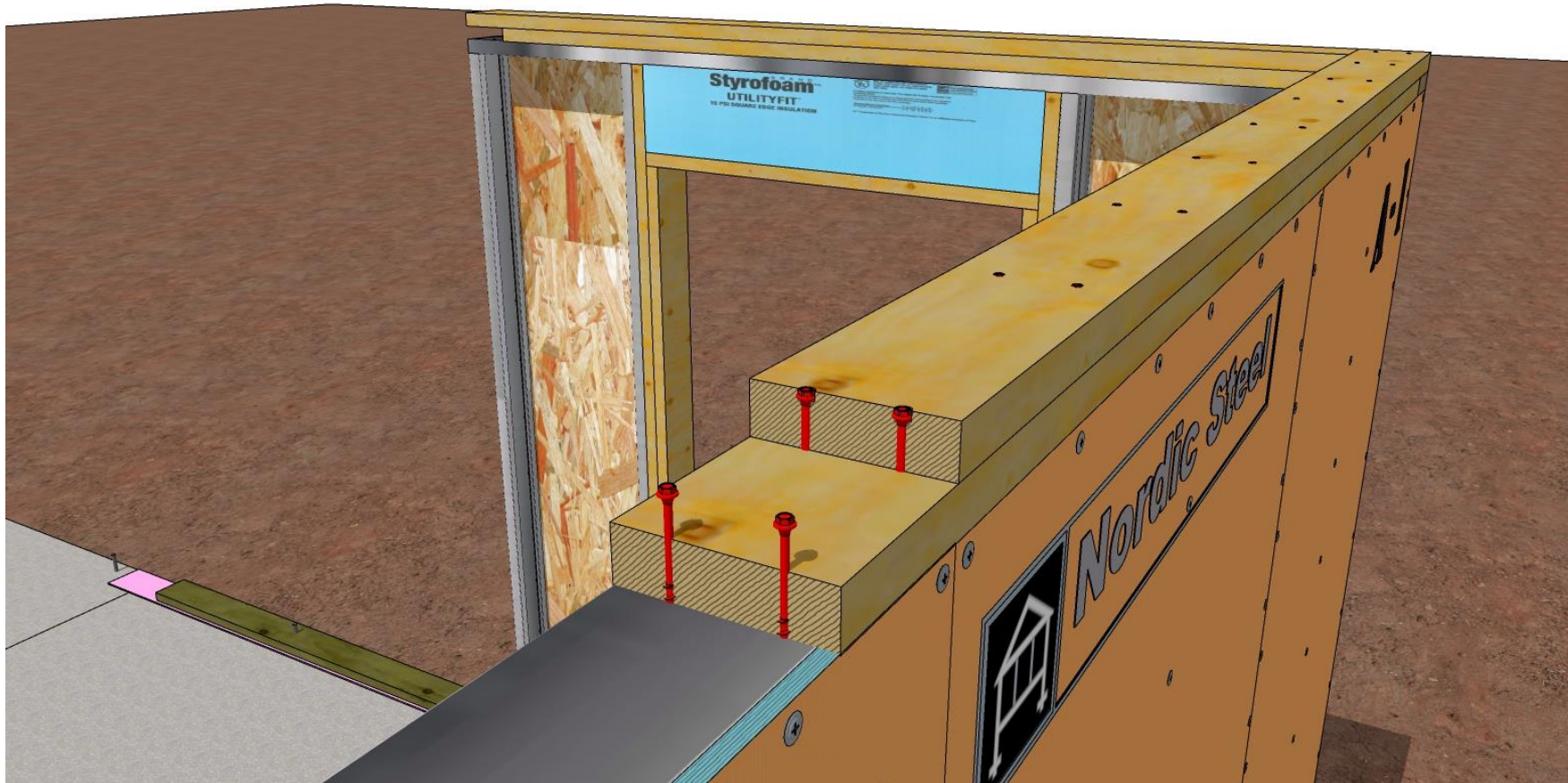
Angular precision
and strength at each
inside and outside
corner is built into
the SuperPanel
design.



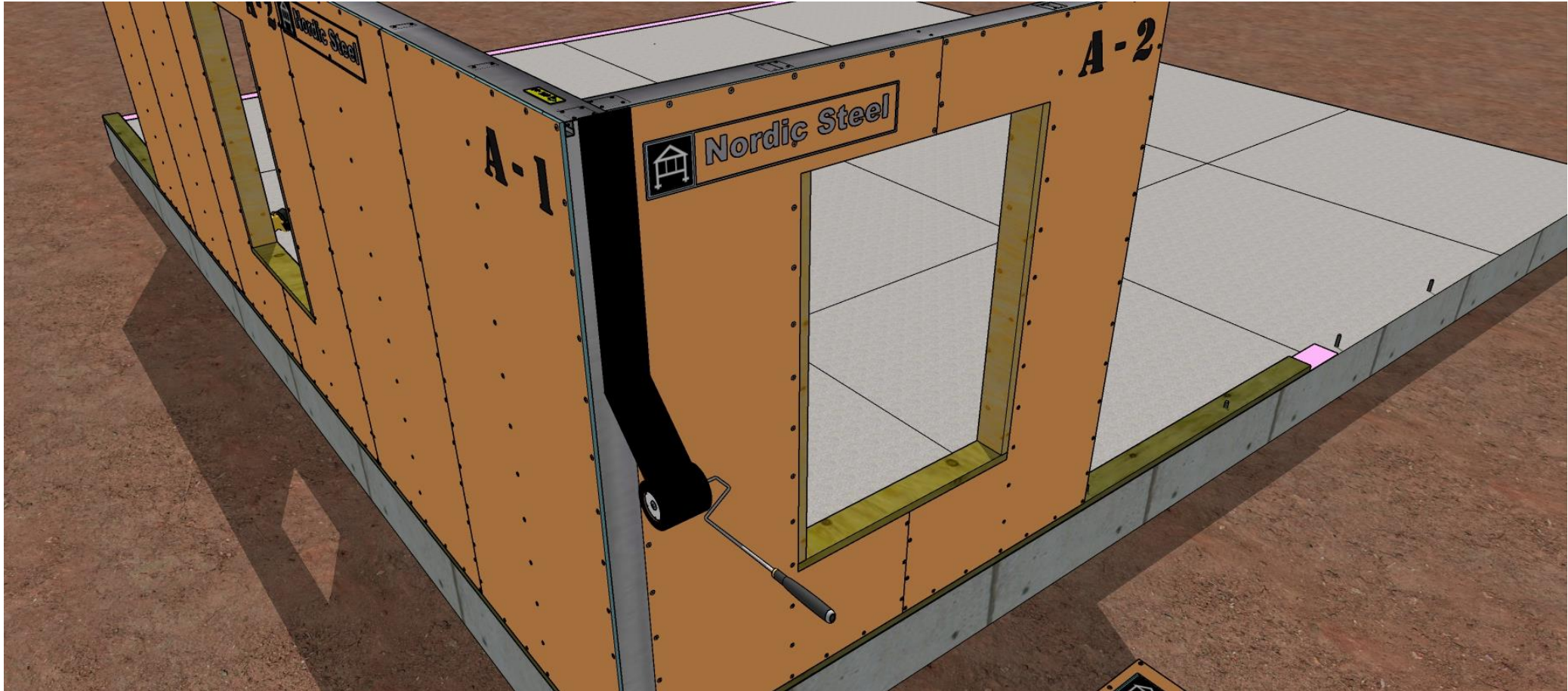
Attach first row of 2x6" Cap Plates by screwing from underneath top section of SuperPanel into Cap Plate.

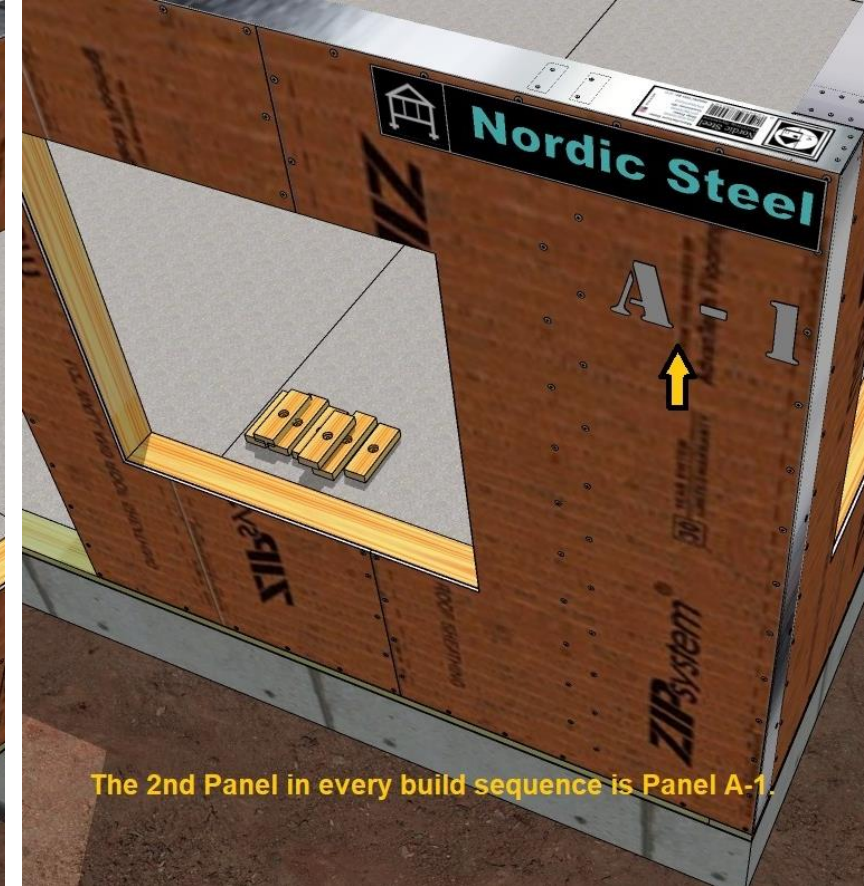
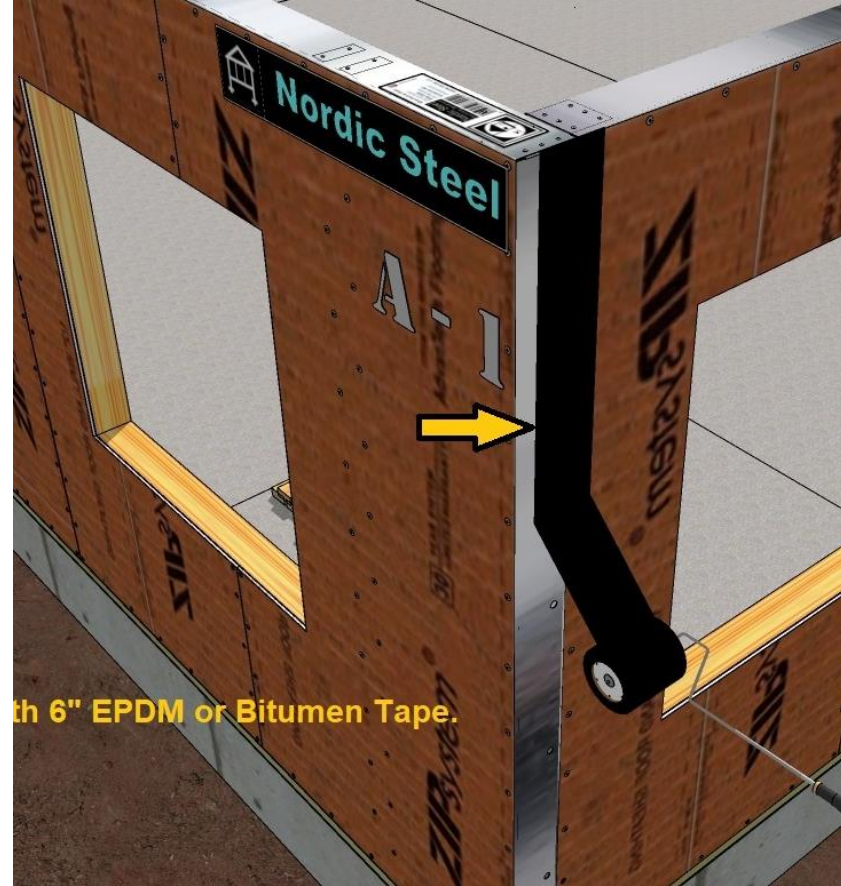
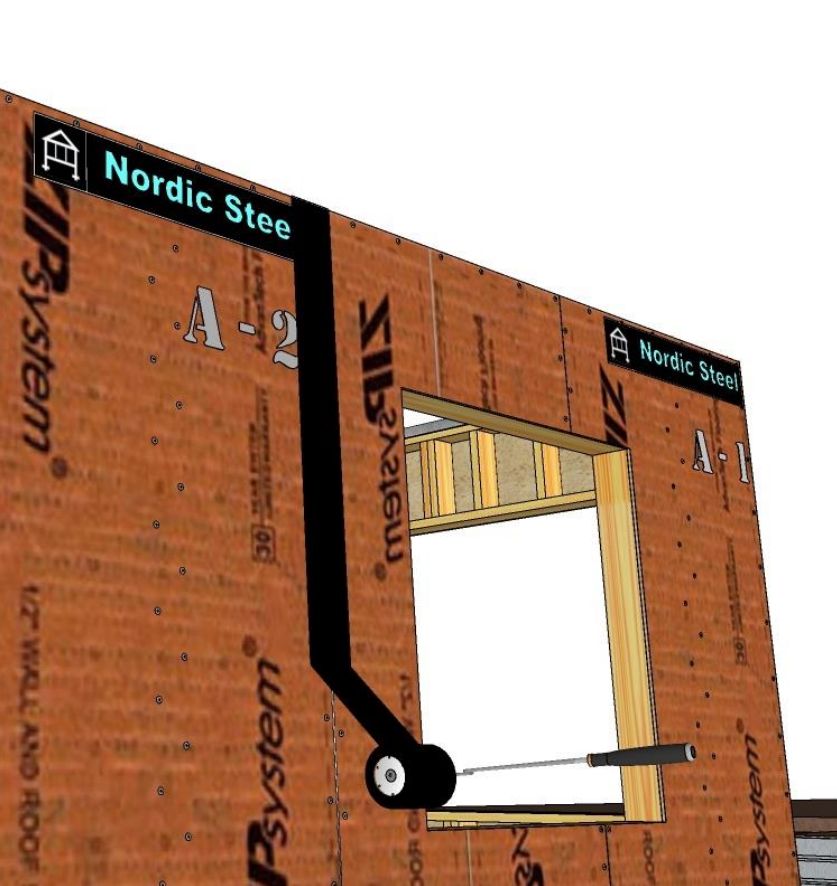


Once bottom Cap Plate row is affixed, run Timberloc screws or similar self tapping, 4" screws through top Cap Plate and into SuperPanel.



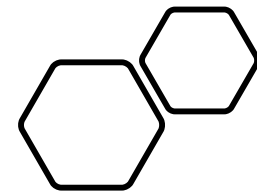
All Seams and joints are taped.



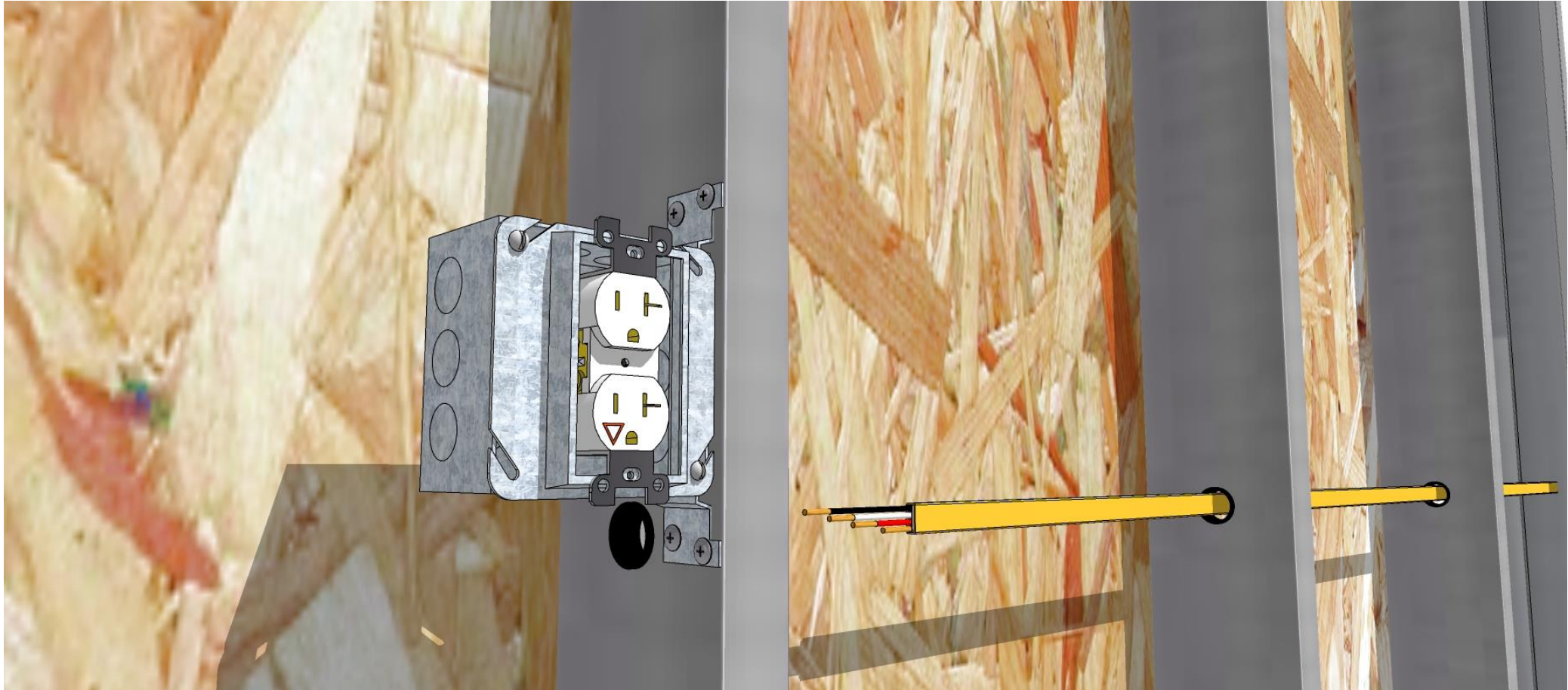


All corners require ZIP™ Tape, all other SuperPanel Joints can either be taped or use ZIP™ Liquid Flashing

- When choosing ZIP™ Huber, ½", or ExtremeGreen™ MgO structural sheathing, no house-wrap is necessary.



All SuperPanels come pre Bored and fitted with protective grommet to run Romex and electric cable with ease. Bores for EMT and Flex Armored Cable are likewise provided.



Where required, we have corner braced SuperPanels.

- The location and configuration of the bracing member are subject to structural engineer's requirements.

